



WALL-MOUNTED RESCUE KIT

LV/25 KV/36 KV

STORAGE MODULES



ACCIDENTS AND INJURIES ARE RARE BUT OFTEN SERIOUS

Over the past 30 years, the number of workplace injuries and electricity-related injuries has been dropping regularly.

However, *when they do occur*, electrical injuries continue to be particularly serious. Every year, about a dozen workers are killed by electrocution.

If poorly managed, such injuries can also lead to fires and explosions.

ELECTRIC SHOCK

Injury that can lead to a loss of consciousness, but not death.

ELECTROCUTION

Fatal injury.



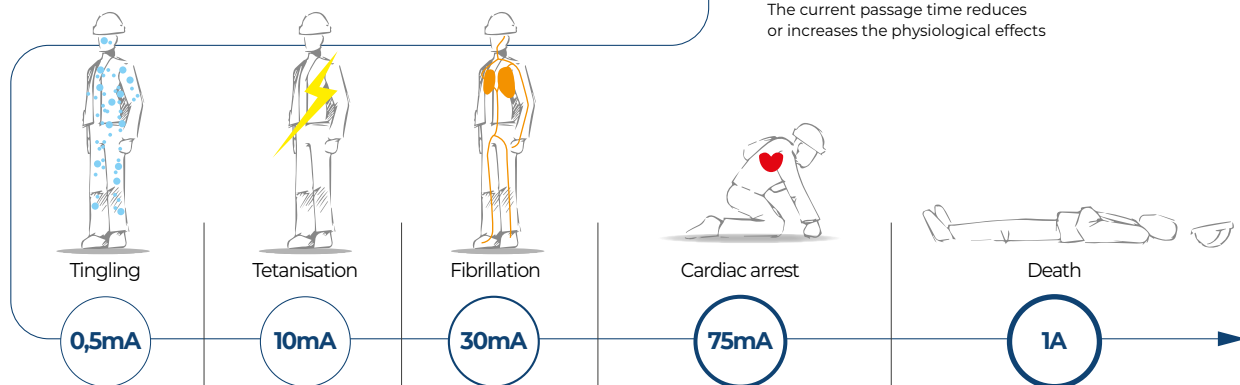
HEALTH EFFECTS

Electric shocks vary in severity, depending on:

- current frequency,
- current intensity (hazard from 5 mA),
- duration of passing of current,
- contact area,
- current path,
- condition of skin (dry, moist, wet) and type of ground.

INTENSITY PASSING THROUGH THE HUMAN BODY*

* Simplified values.
The current passage time reduces or increases the physiological effects



WALL-MOUNTED RESCUE KIT

KIT THAT IS NECESSARY AND RAPIDLY ACCESSIBLE FOR RESCUE IN THE EVENT OF AN INCIDENT WITH OR NEAR A LOW OR MEDIUM VOLTAGE ELECTRICAL INSTALLATION

➤ RESPONSE

The first few minutes following an accident are very important: **you need to act very fast** to increase the victim's chances of survival.

Because voltage may continue to be present (even after the power has been switched off), **appropriate equipment must be used** to help the victim.



❌ DO NOT TRY TO REMOVE THE VICTIM WITHOUT APPROPRIATE EQUIPMENT



✅ REMOVE THE VICTIM (OR CABLE) WITH THE ITEMS IN THE RESCUE KIT



COMPACT, WITH GUARANTEED CONTENTS

Large box: 790 x 790 x 291 mm

Small box: 790 x 400 x 291 mm

- May be fitted with a shelf. (A set of MV fuses can be stored horizontally or two helmets)
- Boxes with transparent sealed lid (IP54),
- Supplied with wall mounting kit
- Handle for keeping the box closed, which can be fitted with seals.



25 KV TYPE KIT

LOW VOLTAGE version:

- Class 0 insulating gloves
- Class 0 insulating mat

36 KV version:

- Class 4 insulating gloves
- 36 KV stool



Rescue stick



Insulating gloves



Insulating stool



Insulating boots



Voltage detector

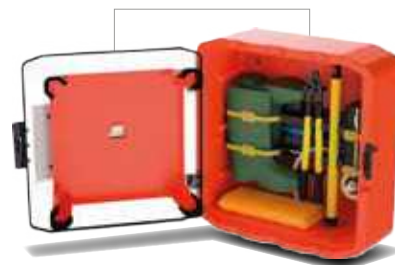


Adhesive barrier tape



Talc Bottle

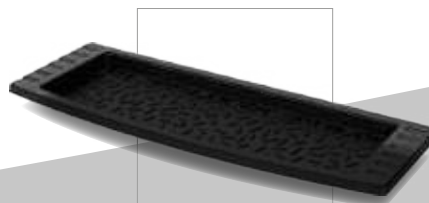
MODULAR DESIGN ENABLES CUSTOMISATION TO YOUR OPERATION



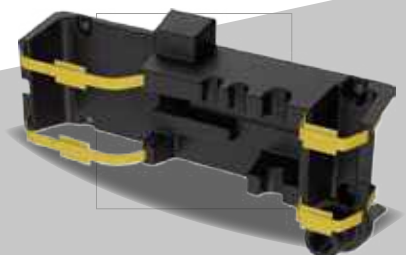
Large module



Small module optional



Shelf
(3 positions possible in the large module, 2 in the small module)



Dedicated shelf for the voltage detector, stick, cable cutter, marker, boots

LABORATORIES

INDUSTRY

AUTOMOBILE
ASSEMBLY
GARAGES

**ELECTRICAL
RISKS:**
OCCUR IN
ALL AREAS
OF BUSINESS



OIL
& GAS

SHIP
BUILDING





METRO
TRAMWAY
TRAIN

MINING



> THE RANGE AVAILABLE

NB: Please enquire for customised composition.

Reference	Description
PS2-BT-EN	 Large wall-mounted kit with equipment for low-voltage use with insulating mat and posters in English
PS2-25KV-EN	 Large wall-mounted kit with equipment for use up to 25 KV use with insulating stool and posters in English
PS2-36KV-EN	 Large wall-mounted kit with equipment for use up to 36 KV use with insulating stool and posters in English
PS2-PM	 Small empty module, supplied with no components, no posters and no shelf (two shelves possible)
PS2-GM	 Large empty module, supplied with no components, no posters and no shelf (three shelves possible)
PS2-CLAY	 Single Shelf Only

Components included in the Different Kits

Item number	Description	Quantity	PS2-BT-FR (LV version)	PS2-25KV-FR (25 KV version)	PS2-36KV-FR (36 KV version)
TB19-45	Live working boots - Size 45	1 pair		X	X
GLB-0-10	Class 0 insulating gloves - Size 10	1 pair	X		
GLB-3-10	Class 3 insulating gloves - Size 10	1 pair		X	
GLB-4-10	Class 4 insulating gloves - Size 10	1 pair			X
TS10	Protective case for insulating gloves	1 unit	X	X	X
TS10T	Talcum Powder	1 unit	X	X	X
UNITAGUFE	Contactless voltage detector	1 unit	X	X	X
PPOLF2/011APV	Telescopic insulating stick	1 unit	X	X	X
CSVES	Rescue hook for telescopic insulating stick	1 unit	X	X	X
TTCL0 0.6X1M	Insulating mat, Class 0 - 0.6X1 m	1 unit	X		
TT015M36KV	Insulating stool, 36 KV	1 unit		X	X
S174JN	Adhesive barrier tape	1 unit	X	X	X
AF2-PS2-EN	Set of two adhesive door posters for version identification, and instructions for use	1 unit	X	X	X



INTERNATIONAL SALES
SFEI

815B, chemin du Razas – ZI Les plaines
26780 Malataverne
Tél. +33 (0)4 75 90 58 00
export@sf-electric.com

UK SALES
PBWEL

Unit 1, Leafield Way, Leafield Industrial Est,
Corsham, Wiltshire, SN13 9SW, ENGLAND
Tel: +44 (0) 1225 811449
weir@pbwel.com
www.pbwel.com

AUSTRALIA SALES
HYLEC

39 Millenium Place
Tingalpa Qld 4173, AUSTRALIA
Tel: (07) 3396 2220

<https://www.hylec.com.au/>