



TM

STANCO

S A F E T Y
P R O D U C T S

Standing between you and danger for thirty years.



Table of Contents

APPAREL

Coveralls / Bib Overalls	3 & 4
Button-up Shirts	5 & 6
Jeans / Work Pants	7 & 8
HRC Knits	
(Shirts & Sock Hoods)	9 & 10

ARC FLASH

Temp Test Arc Flash	11 - 20
Accessories	21 & 22
Lightweight Arc Flash Kit	23 & 24

SPECIALTY CLOTHING & FABRICS

Winter Lined Clothing	25 & 26
Flame Resistant Clothing	27 & 28
Leather Clothing	29 & 30
Gold Band Clothing	31 & 32
Welders Wear Clothing	33 & 34
Aluminized & Aluminized Combination Clothing	35 - 38

HAND PROTECTION

Aluminized & Aluminized Combination	39
Kevlar Blend (Woven)	40 & 41
Cover Mitts	42
Kevlar Terrycloth	42
High-Temp	43
Driver's & TIG Gloves	44
High Quality Welding Gloves	45 & 46

SPECIAL APPLICATION

Protective Clothing	47 - 50
Roll Goods and Welding Blankets	51

FR Protective Apparel

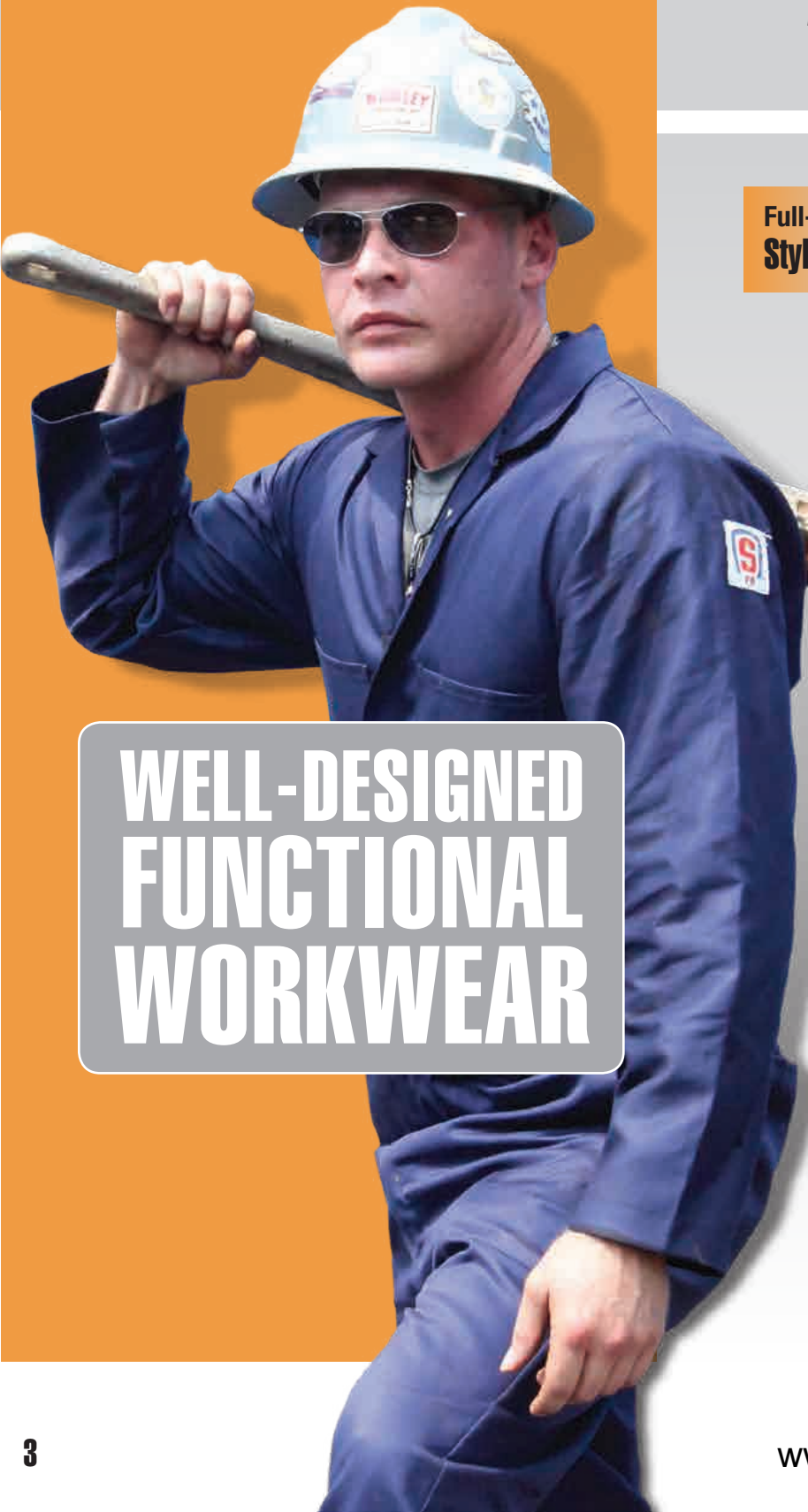
Choose based on Fabric/Brand, Compliance or Application

Stanco has a wide variety of FR Fabrics for Electric Arc and Flash Fire Protection. Whether your preference is color selection, extended wear life, comfort or economic pricing, we have it!

Fabric/Brand	Compliance	Application	Description & Characteristics
FR7A®	ASTM D 6413		Flame resistant 100% cotton, designed for light-duty welding. Will self- extinguish when exposed to flame or thermal ignition sources. Fabric retains flame resistance for up to 50 home washings.
WESTEX Indura®	NFPA 2112 NFPA 70E		A high grade 100% cotton. Flame resistance is guaranteed for the life of the garment.
WESTEX UltraSoft®	NFPA 2112 NFPA 70E		One of the highest levels of quality and protection in an FR cotton fabric. 88% cotton, 12% high tenacity nylon with guaranteed flame resistance for the life of the garment. Superior protection from electric arc and flash fire exposure.
WESTEX UltraSoft AC®	NFPA 2112 NFPA 70E		Flame-resistant 88% Long-Staple Cotton / 12% High Tenacity Nylon (the long staple cotton gives this fabric a better feel and increased comfort.) is guaranteed for the life of the garment, even in high temperature industrial washings.
WESTEX VINEX®	NFPA 70E		85% inherently flame-resistant vinyl fiber and 15% polynosic rayon retains FR properties throughout the service life of the garment.
WESTEX® DH	NFPA 2112 NFPA 70E		A dual hazard fabric that is inherently flame-resistant. A blend of 48% tencel, 40% modacrylic and 12% aramid fibers for outstanding breathability and moisture management to the end of the sentence.
Nomex® IIIA by Dupont™	NFPA 2112		Inherently flame-resistant, it can't be degraded by laundering. Garment life is usually 3-5 times that of FR cotton.
TUFFWELD® by TenCate	NFPA 70E		Flame-resistant fabric designed for welding garments. A blend of FR rayon and para-aramid, it provides superior protection with excellent durability and comfort.
Dual Mirror Aluminized Fabrics by GENTEX®	NFPA 1971		Available in aluminized Carbon Kevlar®, aluminized Kevlar®, aluminized PFR Rayon and aluminized PBI®.
P.B.I. Gold® by PBI Performance Products	NFPA 1971		PBI® (polybenzimidazole) and Kevlar®, an inherently flame-resistant fabric, is recommended for firefighters. Lightweight PBI fabric is also used in electric utility and petrochemical applications.
100% Wool	N/A		Flame-resistant wool provides excellent insulation qualities, is cost-effective and long lasting.
Carbon Felt	N/A		High temperature, non-woven material with protection up to 3000 degrees F. Lightweight, durable and scratch-resistant.
FR Arriva by Stanco	ASTM D 6413		Flame-retardant 100% cotton, designed for light-duty welding. Will self-extinguish when exposed to flame or thermal ignition sources. Fabric retains flame resistance for up to 50 washings.
FRC Arriva by Stanco	NFPA 2112 NFPA 70E		A higher grade of 100% cotton. Flame-resistant properties throughout the service life of the garment.
FRCN Arriva by Stanco	NFPA 2112 NFPA 70E		One of the highest levels of quality and protection in an FR cotton fabric. 88% cotton, 12% high tenacity nylon with guaranteed flame resistance for the life of the garment. Superior protection from electric arc and flash, fire exposure.

APPAREL

Coveralls



WELL-DESIGNED
FUNCTIONAL
WORKWEAR

APPLICATION



FLASH FIRE



ARC FLASH

Full-Featured Deluxe Style Coverall
Style 686



- Zipper leg openings
- Zip closure chest pocket
- Reflective tape configuration meets ANSI Class 3
- NFPA 70E CAT 2, ATPV 8.7 cal/cm²

Sizing chart
on page 53



Deluxe Style / Contractor Style / Hi-Vis Coverall

	CAT 2		CAT 2	CAT 2	CAT 2	CAT 2	CAT 1	
Prefix	US		UAC	FRI	FRC	DH	NX	
Fabric	UltraSoft®		UltraSoft®, AC	Indura®	100% Cotton, Durable FR	IFR Blend	Nomex® IIIA	
Weight oz/yd²	9	7	7	9	6	4.5	6	4.5
Arc rating cal/cm²	12.4	8.7	8.3	11.5	5.7	4.8	5.7	4.8
Royal Blue (RB)	●	●	▲	●	▲	▲	●	●
Navy Blue (NB)	●	●	▲	●	●	▲	●	●
Medium Blue (MB)	▲	▲	▲	▲	▲	▲	▲	▲
Tan (TN)	●	●	▲	●	●	▲	●	●
Orange (OR)	▲	●	▲	●	▲	▲	●	●
Gray (GRY)	▲	●	▲	●	▲	▲	▲	▲
Red (RD)	▲	▲	▲	▲	▲	▲	▲	▲
Yellow (Y)	▲	▲	▲	▲	▲	▲	▲	▲
Spruce Green (SG)	▲	▲	▲	▲	▲	▲	▲	▲
Black (BK)	▲	▲	▲	▲	▲	▲	▲	▲
Hi-Vis	▲	▲	▲	●	●	▲	●	●
Part #*	US9681	US7681	UAC7681	FRI681	FRC681	DH7681	NX6681	NX4681
	US9670	US7670	UAC7670	FRI670	FRC670	DH7670	NX6670	NX4670

In-Stock ● Special Order ▲



Hi-Vis Coverall
Style US7681HVV2RT4



- NFPA 70E CAT 2, ATPV 8.7 cal/cm²
- ANSI Class 3 High Visibility
- 7 oz. Westex UltraSoft® fabric
- 2" reflective tape
- Elasticized waistband + Full-action back
- Two-way, concealed brass zipper
- Six pockets (2 front, 2 rear, 2 pass-through pockets)

Full-Featured Contractor Style Coverall
Style 681



APPAREL

Button-Up
Shirts

APPLICATION



FLASH FIRE



WELDING



ARC FLASH

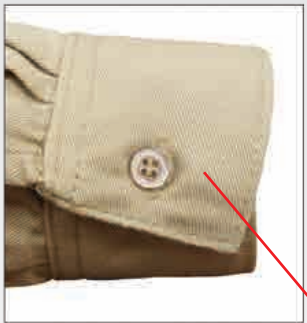
Deluxe Style & Classic Style Work Shirt — Styles 412 & 410

	CAT 2	CAT 2	CAT 2	CAT 2	CAT 2	CAT 1
Prefix	US	UAC	FRI	FRC	DH	NX
Fabric	UltraSoft®	UltraSoft®, AC	Indura®	100% Cotton, Durable FR	IFR Blend	Nomex® IIIA
Weight oz/yd²	7	7	9	7	7.5	4.5
Arc rating cal/cm²	8.7	8.3	11.5	8	8.6	4.8
Royal Blue (RB)	▲	▲	▲	▲	▲	▲
Navy Blue (NB)	●	▲	●	▲	▲	●
Medium Blue (MB)	▲	▲	▲	▲	▲	▲
Tan (TN)	●	▲	●	▲	▲	●
Orange (OR)	▲	▲	▲	▲	▲	▲
Gray (GRY)	▲	▲	▲	▲	▲	▲
Red (RD)	▲	▲	▲	▲	▲	▲
Yellow (Y)	▲	▲	▲	▲	▲	▲
Spruce Green (SG)	▲	▲	▲	▲	▲	▲
Black (BK)	▲	▲	▲	▲	▲	▲
Part #*	US7412	UAC7412	FRI412	FRC412	DH7412	NX4412
	US7411	UAC7411	FRI411	FRC411	DH7411	NX4411

In-Stock ● Special Order ▲



STYLISH
STANCO
PROTECTION



Westex
UltraSoft®

Deluxe Style Button-Up Shirt
Style 412



Classic Style Button-Up Shirt
Style 410



Style 410 features

- Topstitched collar
- Topstitched cuffs with button closure
- Button front closure
- Two chest pockets with button down flap closure

Style 412 features

- Topstitched button down collar
- Topstitched cuffs with button closure
- Placket front with button closure
- Two large V-point chest pockets with button down flap closure

Sizing chart
on page 53



APPAREL

Jeans and Work Pants

APPLICATION



FLASH FIRE



WELDING



ARC FLASH

Heavy Duty Carpenter Jeans
Style 512



Features

- Hammer Loop
- Tool Pocket



Classic Style & Deluxe Style Work Pants — Styles 511 & 513

	CAT 2	CAT 2	CAT 2	CAT 2	CAT 2	CAT 1
Prefix	US	UAC	FRI	FRC	DH	NX
Fabric	UltraSoft®	UltraSoft®, AC	Indura®	100% Cotton, Durable FR	IFR Blend	Nomex® IIIA
Weight oz/yd²	7	7	9	7	7.5	4.5
Arc rating cal/cm²	8.7	8.3	11.5	8	8.6	4.8
Royal Blue (RB)	▲	▲	▲	▲	▲	▲
Navy Blue (NB)	●	▲	▲	▲	▲	▲
Medium Blue (MB)	▲	▲	▲	▲	▲	▲
Tan (TN)	●	▲	▲	▲	▲	▲
Orange (OR)	▲	▲	▲	▲	▲	▲
Gray (GRY)	▲	▲	▲	▲	▲	▲
Red (RD)	▲	▲	▲	▲	▲	▲
Yellow (Y)	▲	▲	▲	▲	▲	▲
Spruce Green (SG)	▲	▲	▲	▲	▲	▲
Black (BK)	▲	▲	▲	▲	▲	▲
Part #*	US9513	UAC7513	FRI513	FRC513	DH7513	NX6513
	US9511	UAC7511	FRI511	FRC511	DH7511	NX6511

In-Stock ● Special Order ▲



Westex
UltraSoft®

Classic Style Work Pants
Style 511



Features

- Two front swing pockets and two back patch pockets
- Zipper front, snap closure

Deluxe Style Work Pants
Style 513



Features

- Two front swing pockets and two back welted pockets
- Zipper front, concealed snap closure

Sizing chart
on page 53



APPAREL

Knit Shirts /
Balaclava
Hoods

APPLICATION



FLASH FIRE



WELDING



ARC FLASH

Protection
Comfort ... Value!



Henley Style Shirt
SFRK6HSTN

- Style features
- Cotton-blend knit
 - CAT 2
 - 10.9 cal/cm²

Sizing chart
on page 53



HRC Knit Shirts

	CAT 2		
Prefix	SFRK		
Fabric	Carbon Fiber		
Arc rating cal/cm ²	6	6	11
Weight oz/yd ²	10.9	10.9	21.8 (Ebt)
Navy Blue (NB)	●	▲	●
Tan (TN)	●	▲	▲
Orange (OR)	▲	▲	▲
Gray (GRY)	●	▲	▲
Part #*	SFRK6HSTN	SFRK6TSNB	SFRK11ZSSNB

In-Stock ● Special Order ▲

Henley Style Shirt
SFRK6HSGRY



- Style features
- Cotton-blend knit
 - CAT 2
 - 10.9 cal/cm²

Henley Style Shirt
SFRK6HSNB



- Style features
- Cotton-blend knit
 - CAT 2
 - 10.9 cal/cm²

Knit Sock Hoods —
Styles NXL778, SFRK778, CK778

	CAT 2	CAT 2	CAT 3
Prefix	NXL	SFRK	CK
Fabric	20% Nomex, 80% Lenzing FR	Carbon Fiber	100% Cotton
Arc rating cal/cm ²	10.1	12	35
Navy Blue (NB)	▲	●	▲
White	●	▲	▲
Black (BK)	●	▲	●
Part #*	NXL778	SFRK778	CK778

In-Stock ● Special Order ▲

NXL778



CK778



SFRK778



ARC FLASH

TempTest™
Kits, Suits &
Accessories

Stanco offers protective apparel
and accessories that meet:

- NFPA 70E
- 2178 Certified
- ASTM F1506 Specifications

TESTED
TRUSTED
TempTest

When an electric current passes through air between ungrounded and grounded conductors, the temperatures can reach over 25,000°F. Exposure to these extreme temperatures both burn the skin directly and cause ignition of clothing, adding to the burn injury. The majority of hospital admissions due to electrical accidents are from the arc flash burns, not from shock.

Each year more than 2,000 people are admitted to burn centers with severe arc flash burns. Arc flash can kill at distances of 10 ft.

-NFPA 70E Annex K.3



APPLICATION



FLASH FIRE



ARC FLASH

CAL RATINGS

8.7 cal/cm²	40 cal/cm²
12.4 cal/cm²	44 cal/cm²
20 cal/cm²	74 cal/cm²
25 cal/cm²	83 cal/cm²

Standard for Electrical Safety Employee Workplaces
Table 130.7 (C)(11) Protective Clothing Characteristics

CAT	Clothing Description	Required Minimum Arc Rating of PPE cal/cm²
1	Arc-Rated FR Shirt and FR Pants or FR Coverall and Arc-Rated Face Shield or Arc Flash Suit Hood	4
2	Arc-Rated FR Shirt and FR Pants or FR Coverall and Arc-Rated Flash Suit Hood or Arc-Rated Face Shield and Arc-Rated Balaclava	8
3	Arc-Rated FR Shirt and FR Pants or FR Coverall, and Arc Flash Suit and Arc-Rated Flash Suit Hood selected so that the system arc rating meets the required minimum	25
4	Arc-Rated FR Shirt and FR Pants or FR Coverall, and Arc Flash Suit and Arc-Rated Flash Suit Hood selected so that the system arc rating meets the required minimum	40

NFPA 70E states, "employees shall wear FR clothing wherever there is a possible exposure to an electric arc flash." This requires employees working on or near energized parts and equipment to wear flame resistant clothing that meets the requirements of ASTM F1506 and is appropriate to the potential energy of the hazard. Employers are required to perform an arc hazard analysis to determine the potential energy of the hazard and the flash protection boundary.

TTEK

Economy Suit features

- Standard Hood (optional Air Flow Hood Available)
- 50" Coat
- 15" Knee-Length Leggings
- Hard Hat
- Gear Bag
- Safety Glasses & Ear Plugs

Westex
UltraSoft®



TTK

Standard Suit features

- Standard Hood (optional Air Flow Hood Available)
- 35" Coat
- Bib Overalls
- Hard Hat
- Gear Bag
- Safety Glasses & Ear Plugs

Westex
UltraSoft®



Sizing chart
on page 53



www.hylec.com.au

ARC FLASH

CAT 2, Coverall
ARC Flash
Kit



APPLICATION



ARC FLASH

CAL RATINGS

8 cal/cm²
12 cal/cm²
20 cal/cm²

The CAT 2 Coverall Kit includes:

- Westex UltraSoft® Coverall
- Nomex/FR Lenzing Knit Sock Hood
- Face Shield with Chin Cup and Slotted Headgear
- Hard Hat
- Gear Bag
- Safety Glasses & Ear Plugs

Available in 8.0 cal/cm²
and 12.0 cal/cm²



TT8 681K



Coverall Arc Flash Kit

	CAT 2	CAT 2
Prefix	TT	TT
Fabric	UltraSoft®	
Weight oz/yd ²	7	9
Arc rating cal/cm ²	8.7	12.4
Royal Blue (RB)	●	●
Navy Blue (NB)	●	●
Tan (TN)	●	●
Orange (OR)	▲	▲
Gray (GRY)	●	▲
Part #*	TT8-681K	TT11-681K

In-Stock ● Special Order ▲

Temp Test® Bib Overall

	CAT 2	CAT 2	CAT 3	CAT 4	CAT 4
Prefix	TT	TT	TT	TT	TT
Fabric	UltraSoft®				
Weight oz/yd ²	1-Ply 9 oz.	1-Ply 13 oz.	2-Ply 7 oz.	1-Ply 13 oz. 1-Ply 9 oz.	1-Ply 13 oz. 2-Ply 9 oz.
Arc rating cal/cm ²	12.4	21.0	25.0	40.0	60.0
Royal Blue (RB)	●	●	●	●	●
Part #*	TT11-670	TT20-670	TT25-670	TT40-670	TT59-670

In-Stock ● Special Order ▲

Bib Overall Style 670 includes:

- Elastic Take-up Shoulder Strap
- Two Front and Rear Pockets with full Bib Section Pocket

Bib Overall
Style 670



Sizing chart
on page 53



Economy Arc Flash Kit

	CAT 2	CAT 2	CAT 3	CAT 4	CAT 4
Prefix	TTEK	TTEK	TTEK	TTEK	TTEK
Fabric	UltraSoft®				
Weight oz/yd ²	1-Ply 9 oz.	1-Ply 13 oz.	2-Ply 7 oz.	1-Ply 13 oz. 1-Ply 9 oz.	1-Ply 13 oz. 2-Ply 9 oz.
Arc rating cal/cm ²	12.4	21.0	25.0	40.0	60.0
Royal Blue (RB)	●	●	●	●	●
Part #*	TTEK11	TTEK20	TTEK25	TTEK40	TTEK59

In-Stock ● Special Order ▲

Standard Arc Flash Kit

	CAT 2	CAT 2	CAT 3	CAT 4	CAT 4	CAT 4	CAT 4
Prefix	TTEK	TTEK	TTEK	TTEK	TTEK	TTEK	TTEK
Fabric	UltraSoft®					NORFAB	NORFAB
Weight oz/yd ²	1-Ply 9 oz.	1-Ply 13 oz.	2-Ply 7 oz.	1-Ply 13 oz. 1-Ply 9 oz.	1-Ply 13 oz. 2-Ply 9 oz.		
Arc rating cal/cm ²	12.4	21.0	25.0	40.0	60.0	44	77
Royal Blue (RB)	●	●	●	●	●	CARMEL	CARMEL
Part #*	TTEK11	TTEK20	TTEK25	TTEK40	TTEK59	TTEK44	TTEK74

In-Stock ● Special Order ▲

ARC FLASH

TempTest™
Coverall

APPLICATION



FLASH FIRE



WELDING



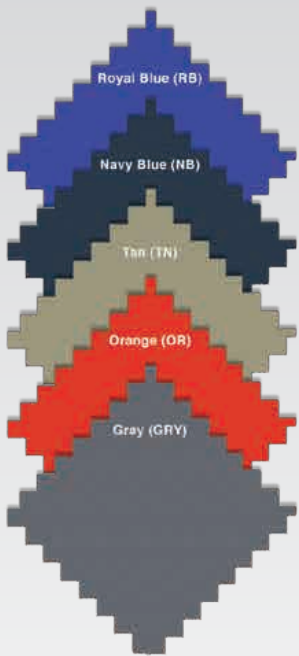
ARC FLASH

CAL RATINGS

8.7 cal/cm²

12.4 cal/cm²

UNIQUE
STANCO
FEATURES



Sizing chart
on page 53



Full-Featured Contractor Style Coverall
Style 681

- Elasticized waistband
- Full-action back
- Two-way concealed brass zipper
- Two front, rear, chest and pass-through pockets

Westex
UltraSoft®

Temp Test® Full-Featured Coverall

	CAT 2	CAT 2
Prefix	US	US
Fabric	UltraSoft®	
Weight oz/yd²	7	9
Arc rating cal/cm²	8.7	12.4
Royal Blue (RB)	●	●
Navy Blue (NB)	●	●
Tan (TN)	●	●
Orange (OR)	▲	▲
Gray (GRY)	●	▲
Part #*	US7681	US9681

In-Stock ● Special Order ▲



www.hylec.com.au

ARC FLASH

TempTest™
Coats



CUSTOM
CRAFTSMANSHIP
AVAILABLE

Westex
UltraSoft®

Need a customized ARC Flash
Garment or Kit in a specific CAL
rating? We pride ourselves on
our flexibility to get you what
you need, when you need it.

APPLICATION



CAL RATINGS

8.7 cal/cm²	40 cal/cm²
12.4 cal/cm²	44 cal/cm²
20 cal/cm²	74 cal/cm²
25 cal/cm²	83 cal/cm²

Temp Test® 35" & 50" Coats

	CAT 2	CAT 2	CAT 3	CAT 4	CAT 4
Prefix	TT	TT	TT	TT	TT
Fabric	UltraSoft®				
Weight oz/yd²	1-Ply 9 oz.	1-Ply 13 oz.	2-Ply 7 oz.	1-Ply 13 oz. 1-Ply 9 oz.	1-Ply 13 oz. 2-Ply 9 oz.
Arc rating cal/cm²	12.4	21.0	25.0	40.0	60.0
Royal Blue (RB)	●	●	●	●	●
50" Part #*	TT11-650	TT20-650	TT25-650	TT40-650	TT59-650
35" Part #*	TT11-635	TT20-635	TT25-635	TT40-635	TT59-635

In-Stock ● Special Order ▲

35" Coat — Style 635



50" Coat — Style 650



Full-Featured Deluxe Style Coats

- Velcro closure
- Knit wrists

Westex
UltraSoft®

Sizing chart
on page 53



ARC FLASH

TempTest™ Coats

Standard Hood Style 712

- Features:
- 1 or 2-ply Face Shield attached with FR Hook and Loop
 - Accommodates Hard Hat (not included)



Temp Test® Hoods

	CAT 2	CAT 2	CAT 3	CAT 4	CAT 4
Prefix	TT	TT	TT	TT	TT
Fabric	UltraSoft®				
Weight oz/yd²	1-Ply 9 oz.	1-Ply 13 oz.	2-Ply 7 oz.	1-Ply 13 oz. 1-Ply 9 oz.	1-Ply 13 oz. 2-Ply 9 oz.
Arc rating cal/cm²	12.4	21.0	25.0	40.0	60.0
Royal Blue (RB)	●	●	●	●	●
Style 712 Part #	TT11-712	TT20-712	TT25-712	TT40-712	TT59-712
Style 712AF Part #	TT1-712AF	TT20-712AF	TT25-712AF	TT40-712AF	TT59-712AF

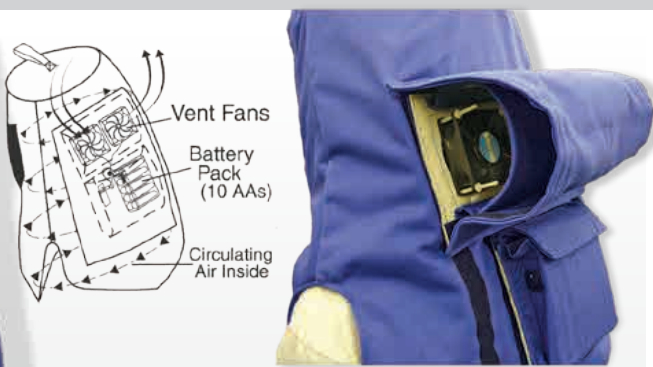
In-Stock ● Special Order ▲

APPLICATION



CAL RATINGS

8.7 cal/cm²	40 cal/cm²
12.4 cal/cm²	44 cal/cm²
20 cal/cm²	74 cal/cm²
25 cal/cm²	83 cal/cm²



Air Flow Hood Style 712AF

- Features:
- 1 or 2-ply Face Shield attached with FR Hook and Loop
 - Accommodates Hard Hat (not included)
 - Battery Powered Air Flow System operates for 9 continuous hours
 - Dual fans with one blowing in and one blowing out
 - Unit is permanently attached to back of hood. Unit is for circulation purposes only, not filtration



Tested and Trusted

The faceshield in the hood was evaluated using ASTM F2178 Standard Test Method for determining the arc rating of face protective products. This method allows for testing face protective products for ignition, melting and burn prediction.

ARC FLASH

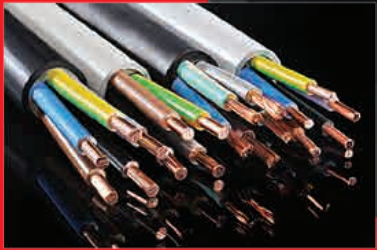
TransVision SHIELD™

Darkens instantly to protect your eyes

APPLICATION



ATPV rating of 55 cal/cm², CAT 4



Clear Vision
Unlike tinted face shields that can impair your vision, our uniquely-coated lens lets you see clearly. Colored wires can be easily identified without lifting the visor.

Optimum eye protection when you need it
The TransVision Shield™ reacts immediately to an arc flash –darkening instantly to protect against temporary blindness and permanent eye damage.

The washable textile (Style FR-Tex CA 350, Arc-rated) is thermally resistant to destruction or ignition when exposed to intense heat and light.

ARC FLASH

TempTest™
Arc Flash
Accessories



APPLICATION



TempTest™ Arc Flash Suits keep you cooler longer with added ease of movement. They are available individually or as part of a complete Arc Flash Kit.

Knit Sock Hood
Style NXL778



- 20% Nomex®/80% Lenzing FR
- HRC 2, 10.1 cal/cm²

Arc Flash Leggings
Style TT(series)25VC



- 15" Leggings with FR Hook and Loop Closure
- Available in 12.4 cal/cm², 21 cal/cm², 38.7 cal/cm², 51.3 cal/cm², 62.1 cal/cm² and 100.3 cal/cm²

Replacement Window
Style DPSL712MG



- 2-Ply Replacement Window for 100.3 cal/cm² Arc Flash Hoods

Replacement Window
Style DPSL712



- 2-Ply Replacement Window for 51.3 cal/cm², 62.1 cal/cm² and 38.7 cal/cm² Arc Flash Hoods

Replacement Window
Style SL712



- 1-Ply Replacement Window for 12.4 cal/cm², 21 cal/cm² and 38.7 cal/cm² Arc Flash Hoods

Leather Protectors
Style LCG (length-size)



- Available in 10", 12", 13" and 14" lengths.

To order the proper leather protector, ASTM specifications require a minimum of 1" per 10,000 Use Volts between the protector and rubber insulating glove.

****Note:** At 480 volts, the protector should be 1" shorter than the rubber insulating glove.

Example Part #:
10" length, size 10 = LCG10-10

Face Shield
Style STS1-20

- Highly Transparent
- True Color Vision
- Fits a Slotted Cap
- Available in 12 cal (STS1-12)
- Available in Full Brim (STS3-20)



Deluxe Gear Bag
Style GB50



- 28" x 14" x 14" Gear Bag for storing all of your Temp Test® Arc Flash clothing and accessories

Hard Hat
Style HH75



- Hard Hat with sizing adjustment
- Only available in white

Rubber Insulating Gloves
Style RLG (class, length-size)



- The Rubber Insulating Gloves are ASTM D 120-09 and in service care ASTM F 496-08. The Leather Protectors comply with ASTM F 696-11.
- Gloves are available in sizes 8-12 and 10", 12", 13" and 14" lengths

Rubber Insulating Gloves

Glove Class	Proof Test Voltage A/C	Maximum Use Voltage AC	Length	Size
00	2,500	500	11", 14"	
0	5,000	1,000	11", 14"	
1	10,000	7,500	14"	8 – 12
2	20,000	17,000	14"	
3	30,000	26,500	16"	
4	40,000	36,000	18"	9 – 12

Example Part#: Class 0, 11" length, size 10 = RLG011-10

Arc Flash Gloves
Style US214WL



- 14" full-cut, wool-lined gloves, 10 oz. ATPV: 76.2
- Available in 12.4 cal/cm², 21 cal/cm², 38.7 cal/cm², 51.3 cal/cm², 62.1 cal/cm² and 100.3 cal/cm²

ARC FLASH

TempTest™
Lightweight
Arc Flash Suit

MORE
PROTECTION
IN A LIGHTER
WEIGHT

TempTest Lightweight
Arc Flash Suit includes:

- Standard Hood
- 35" Coat
- Bib Overalls
- Hard Hat
- Gear Bag
- Safety Glasses
& Ear Plugs



APPLICATION



CAL RATINGS

44.0 cal/cm²
74.0 cal/cm²



Standard Hood
TT44-712



Lightweight Arc Flash Kit
TTK44

Over 40% Lighter Than Cotton

The combination of an inherently FR blend 6oz. outer shell,
matched with a 10 oz. liner, makes one
of the lightest CAT4 Arc Flash Suits on the market!

Bib Overalls
TT44-670



35" Coat
TT44-635



Sizing chart
on page 53



SPECIALTY CLOTHING & FABRICS

Winter Lined Clothing



Track Jacket
FRIG24TMQLNB



Bomber Jacket
FRIG24BJNB



Surcoat
FRIG36TMQLNB



Snap-on Hood
FRI725NB

- Track Jacket and Surcoat include a zip in/out liner and an option for a snap-on hood (sold separately)

APPLICATION



FLASH FIRE



ARC FLASH

Stanco's Winter Lined Clothing is available in a 9 oz. Westex Indura® or 6 oz. Dupont Nomex® outer shell with an FR quilted liner. Call customer service for color availability. Part numbers shown are for Westex Indura®.



FRIG81LNB



FRIG71LNB

Features

- Concealed Zipper Front Closure
- Slanted Zipper Pockets
- Two Side and Rear Pockets
- Set-in Knit Wrist Sleeve Openings
- 27" Zipper Legs

Sizing chart on page 53



Features

- Slanted Zipper Pockets
- Two Side and Rear Pockets
- Double-ply Knees
- Hook and Loop Ankle Adjustments
- 42" Zipper Legs

SPECIALTY CLOTHING
& FABRICS

Flame Resistant
100% Cotton
Clothing



Coverall
FR681

APPLICATION



HIGH HEAT
ABRASION RESISTANCE

9 oz. FR Green 100% Cotton
Clothing also available in
11 oz. Twill

Sizing chart
on page 53



18" Sleeves
FR18ECEC



Features

- Elastic cuffs on both ends
- Also available in 23"

Hard Cap Shroud
FR1229EB



Features

- 12" X 29"
- Expandable elastic band

Work Pants
FR511



Hard Cap Liner
FR770BC



Features

- Hook and Loop closure
- Fits inside Hard Cap Suspension
- 8" Veil

Bib Overall
FR670



36" Bib Apron
FR36B



Features

- Also available with a 24" X 18" leather patch (FR36BP)

Split Leg Apron
FR48SL



24" Waist Apron
FR24W



30" Jacket with Collar
FR630



Jacket with Full Leather Sleeve
FR630LS



Cape Sleeve with 20" Bib
FR601-14



Features

- Also available with 14" Bib (FR601-14)

- Cape Sleeve may be

Classic Style Shirt
FRFR411



Lab Coat
FR645



SPECIALTY CLOTHING & FABRICS

High-Quality Leather Welder's Clothing



APPLICATION



Leather is the very best material for welder's protective clothing. Stanco's leather clothing is only made from side-split cowhide offering protection to a maximum.

**Cape Sleeve with 20" Bib
L2601-20**



Features

- Also available with a 14" Bib (L2601-14)
- Cape Sleeve may be purchased separately (L2601)
- Bibs may also be purchased separately (L220 and L214)

**Description
L25VC, L25, L27**



**30" Jacket with collar
L2630**



Sizing chart
on page 53



**Description
LS35, LS37, LS37VC**



**Waist Apron
L224W**



Features

- 24" x 24"
- Also available in 24" x 18"

**Split Leg Apron
L236SL**



Features

- 24" x 36"
- Also available in 24" x 42" or 24" x 48"

**Bib Apron
L236B**



Features

- 24" x 36"
- Also available in 24" x 42", 24" x 48", or 24" x 52"

**23' Sleeves
L223**



Features

- Adjustable straps
- Also available in 18" length



**Pants
L2511**



Features

- Belt Loops
- Snap Fly
- Waist Sizes 34" — 48"

**Waist Chaps (Cowboy Style)
L2505**



SPECIALTY CLOTHING & FABRICS

Gold Band Leather Welder's Clothing



APPLICATION



HIGH HEAT
ABRASSION RESISTANCE

Leather is the very best material for welder's protective clothing. Stanco's leather clothing is only made from side-split cowhide offering protection to a maximum.

Sizing chart
on page 53



Cape Sleeve with 20" Bib GB2601-20



Features

- Also available with a 14" Bib (GB2601-14)
- Cape Sleeve may be purchased separately (GB2601)

30" Jacket with collar GB2630



Split Leg Apron GB236SL



Features

- 24" x 36"
- Also available in 24" x 42" or 24" x 48"

Waist Chaps (Cowboy Style) GB2505



Features

- Adjustable straps
- Also available in 18" length

Bib Apron GB236B



Features

- 24" x 36"
- Also available in 24" x 42" or 24" x 48"

18" Sleeves GB218



Features

- Also available in 23" length
- Adjustable Straps

14" Leggins GB24



6" Spats GB32



ROD BAG GB275



SPECIALTY CLOTHING & FABRICS

Lightweight Welder's Wear

Stay cool and comfortable with Stanco's lightweight, flame-resistant welder's wear. Welder's Wear® is only available at Stanco.

APPLICATION



WELDING



HIGH HEAT
ABRASSION RESISTANCE

Sizing chart
on page 53



Jacket with full Leather Sleeves
W630LS



Cape Sleeve with 20" Bib
W601-20



Features

- Available with 14" Bib (W601-14)
- Cape Sleeves may be purchased separately W601)
- Bibs may also be purchased separately

30" Jacket with collar
W630



Features

- One inside pocket

Cape with Full Leather Sleeves
& 20" Bib W601LS-20



Features

- Same features as W601-20, except comes with full leather sleeves

Lab Coat
W645



Features

- Two outside pockets
- One breast pocket

18' sleeves with Elastic Cuffs
W18ECEC



Features

- Also available in 23" length

Coverall
W681



Bib Apron with Belly Patch
W36BP



Features

- 24" x 36" Apron
- 24" x 18" Belly Patch
- Available without Belly Patch (W36B)

48" Split Leg Apron
W48LS



Features

- Available with 24" x 18" Belly Patch

Bib Overall
W670



HALF THE
COST OF
LEATHER

SPECIALTY CLOTHING & FABRICS

Aluminized and Aluminized Combination Clothing

HIGH TEMPERATURE HAND & BODY PROTECTION

Stanco's Hi-Temp Gloves, Mitts and Protective Clothing have been designed for maximum protection in the most adverse work conditions. Steel mills, foundries and casting operations, to name a few, have job applications that require hand and body protection for temperatures exceeding 2000°F. Special aramid fabrics, heavy linings and full cut patterns in a variety of designs are available in this line. All styles sewn completely with heavy Kevlar® thread.

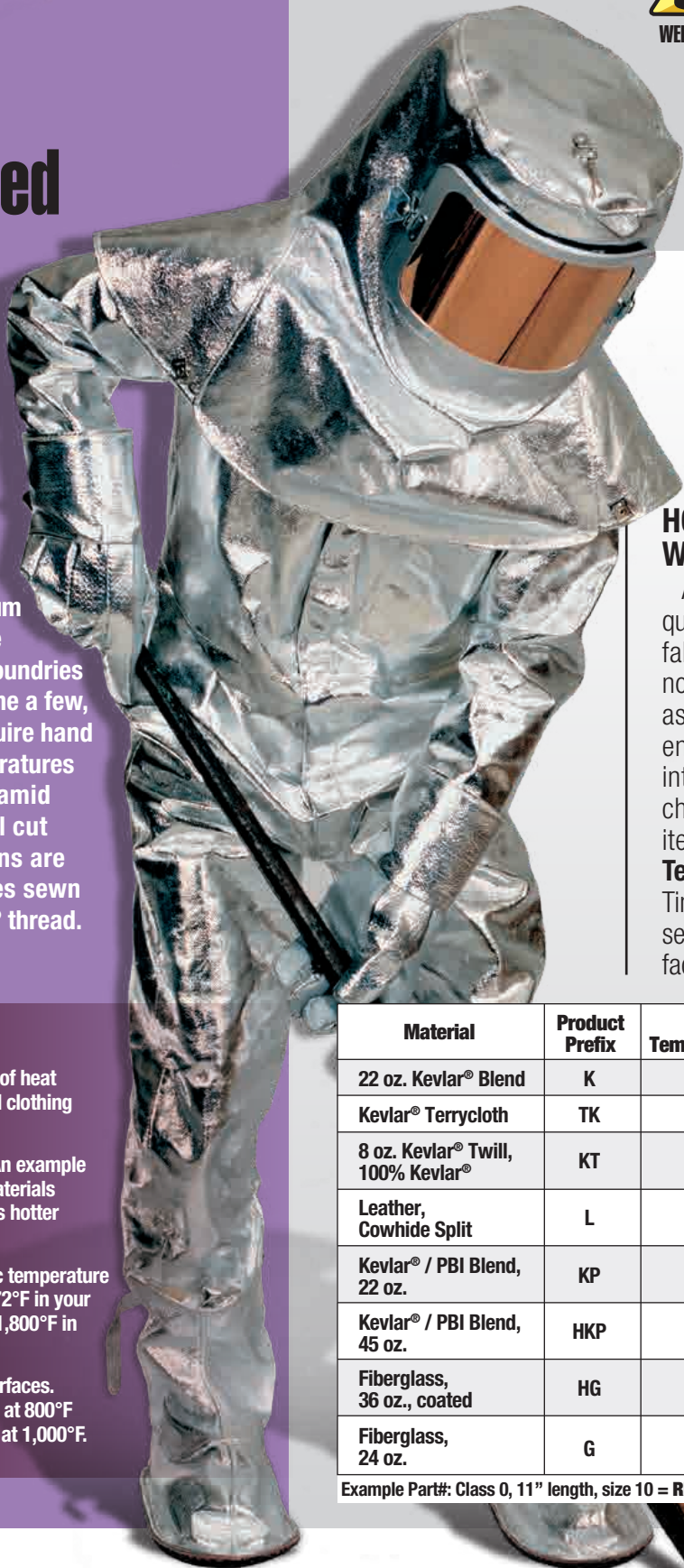
WHAT KIND OF HEAT IS IT?

It is important to understand the types of heat in order to select the proper gloves and clothing for protection.

Radiant: Generated by a heat source. An example would be a fireplace or the sun. The materials being struck absorb the heat's rays (it's hotter standing in the sun than in the shade).

Ambient: The surrounding atmospheric temperature in a particular environment. Example: 72°F in your home; 92°F on the golf course in July; 1,800°F in a flaming building.

Conductive: Direct contact with hot surfaces. Example: touching a hot piece of metal at 800°F or leaning against a heat treating oven at 1,000°F.



APPLICATION



WELDING



HIGH HEAT
ABRASION
RESISTANCE



ARC FLASH

HOW MUCH HEAT WILL IT TAKE?

A good and often asked question for hand protection fabrics. The information noted below is to be used as a guide only. The work environment and area of intended use should be checked for: **Weight** of items being handled; **Temperature** (contact) and Time. Consult our customer service department or your factory sales representative.

Material	Product Prefix	Maximum Temperature Range	Abrasion Resistance
22 oz. Kevlar® Blend	K	1,000°F	3
Kevlar® Terrycloth	TK	1,000°F	4
8 oz. Kevlar® Twill, 100% Kevlar®	KT	900°F	4
Leather, Cowhide Split	L	450°F	5
Kevlar® / PBI Blend, 22 oz.	KP	1,350°F	3
Kevlar® / PBI Blend, 45 oz.	HKP	2,000°F	3
Fiberglass, 36 oz., coated	HG	2,000°F	3
Fiberglass, 24 oz.	G	1,000°F	2

Example Part#: Class 0, 11" length, size 10 = RLG011-10



40" Combination Coat
APB60RFR



Combination Pants
APV511RFR

Item shown:

- 8 oz. Aluminized P.B.I.®
- 9 oz. FR Green Cotton Snap out liner
- Aluminized P.B.I.® provides good protection against radiant heat
- Garments are available in:
Aluminized Rayon (AR)
Aluminized Kevlar® (AK)
Aluminized Carbon Kevlar® (ACK)
Aluminized P.B.I.® (APB)



45" Surgical Style Gown
ARG4SG



30" Aluminized Rayon Coat
ARG30

Sizing chart on page 53



Also available in:

35", 40" & 50" Lengths

Prefix	Material	Characteristics
AR	Aluminized PFR Rayon, 16 oz.	Good reflectivity & radiant heat protection. Economical, low burn-through resistance
APB	Aluminized PBI, 8 oz.	Lightweight and good reflectivity, low burn-through resistance
AK	Aluminized Kevlar®, 17 oz.	Moderate burn-through resistance, excellent against most acids, Reflects well against radiant heat
ACK	Aluminized Carbon Kevlar®, 17 oz.	Excellent burn-through resistance, lightweight and flexible

SPECIALTY CLOTHING & FABRICS



WELDING



HIGH HEAT
ABRASION
RESISTANCE



ARC FLASH

Aluminized & Aluminized Combination Clothing



**Bib Apron (24" X 48")
AR48B**



Also available in:

24" x 30"
24" x 36"
24" x 42"

Sizing chart
on page 53



**Split Leg Apron (24" X 42")
AR42SL**



Also available in:

in 24" x 48"

**Cape Sleeve with Detachable 14" Bib
AR601-14**



Also available:

with 20" Detachable
Bib (AR601-20)"

**18" Sleeves
AR18E**



- Sleeves feature elastic at both ends
- Also available in 23" (AR23E)

**Chaps (24" X 39")
AR505**



Rear View

- Open back
- Adjustable belt and leg strap

**40" Slip-On Leggings
AR506**



Rear View

- Interchangeable for either leg
- Flare and belt fastener

**Deluxe Spat
AR35**



**Boot Covers
AK39**



- Designed to slip over shoes
- Insulated
- Non-Skid heat resistant sole
- Other sole options available

**Replaceable Spring-Type Legging
AR27**



**Hood with Window
AK710**



- 7" x 11" Window
- Gold lens for full face, head and shoulder protection

**Shroud (13" X 29")
AK1329VC**



HAND PROTECTION

Special Application Gloves & Mitts

Special Aramid for use
in Gloves and Mitts offers
MAXIMUM PROTECTION
against heat and
abrasive wear.



Aluminized & Aluminized Combination Gloves

14" Aluminized Rayon Glove
AR214WL



Features

- Made from heat-resistant aluminized fabrics for radiant heat protection. All styles are fully wool lined and sewn with Kevlar® thread

14" Aluminized Carbon Kevlar®
Glove **ACKK214WL**



Features

- Palm and inside cuff are made from 22 oz. Kevlar® Aramid. Back of glove, cuff and thumb are made from Aluminized Carbon Kevlar®

Kevlar® Gloves & Mittens

**BEST
SELLING
KEVLAR
GLOVE**

14" Kevlar® Glove
K214WL

- Made from 22 oz. Kevlar® Blend material, safety yellow color and full wool lined
- All styles are extra large cut and sewn with 100% Kevlar® thread
- 800°F Max Temperature Range

22" Kevlar® Glove
K223WL



14" Kevlar® Glove with Leather
Glove **K214LWL**



Features

- Palm, thumb, & fingers are leather reinforced

Slip-over Glove Cover
K308GC



Features

- Extra Protection from heat and abrasive wear
- 22 oz. Kevlar® Blend fabric

Kevlar® Gloves & Mittens

15" Reversible Kevlar® Mitten
K714QWL



Features

- Wide cuff opening • 5-Ply protection
- Quilted palm • Wool lined

14" Reversible Kevlar® Mitten
Glasshandler's Design **K514QWL**



14" Reversible Kevlar® Mitten
K314WL



Kevlar® Gloves & Mittens

14" Fiberglass Glove
G214WL



Features

- Made from 24 oz. textured fiberglass material, coated to allow maximum wear and protection. All styles are yellow in color, full wool lined, and sewn with Kevlar® thread.

20000 F Max Temperature Range

14" Fiberglass Glove
G214WL



Features

- Palm, thumb, and fingers are leather reinforced

14" Reversible Fiberglass
Mitten **G214WL**



20000 F Max Temperature Range

14" Reversible Heavy
Fiberglass Mitten **G214WL**



Features

- 36 oz. Heavy Fiberglass • 3-Ply Wool/Nomex® combination liner • 5-Ply total protection • Product #HG310CMJ Slip-Over • Cover Mitten is recommended for maximum protection

HAND PROTECTION

Special Application Gloves & Mitts

STANCO offers a complete line of Gloves, Mitts, and Pads for high temperature Hand Protection.

Many other styles are available. Ask your customer service representative.

PBI/Kevlar® Gloves & Mitts

Made from 22 oz. ceramic and Kevlar® Blend material. The best material for high temperature hand protection. All styles are fully wool lined, extra large cut, and sewn with 100% Kevlar® thread.

14" PBI/Kevlar® Blend Glove KP214DWL



Features

- 1,350 F Max Temperature Range

14" Reversible PBI/Kevlar® Mitten KP314DWL



Features

- Double quilted palm
- 4-ply protection

14" Aluminized Rayon Glove AR214WL



Features

- 45 oz. of PBI/Kevlar® material
- Double wool lined
- Jumbo cut
- Protection to 2,000°F for short durations

14" Aluminized Carbon Kevlar® Glove ACKK214WL



Features

- 45 oz. of PBI/Kevlar® material
- Double wool lined
- Jumbo cut
- Protection to 2,000°F for short durations

Kevlar® Gloves & Mitts

Made from heavyweight Kevlar® terrycloth material. All styles are wool lined for excellent insulation. 1,000°F Max temperature range.

14" Kevlar® Terrycloth Reversible Glove TKK214KCWL



Features

- Woven Kevlar® Cuff

14" Kevlar® Terrycloth Glove TK214WL



Features

- All Terrycloth Construction

14" Kevlar® Terrycloth Reversible Glove TK314CWL



Features

- Woven Kevlar® Cuff

14" Kevlar® Terrycloth Reversible Glove TK214RKCWL



Features

- Woven Kevlar® Cuff

Cover Mitts

Unlined 10" Slip-Over Cover Mitts are for Extra Protection against heat and abrasive wear.

Heavyweight Fiberglass Jumbo Cover Mitt HG310CMJ



22 oz. Kevlar® Jumbo Cover Mitt K310CMJ



22 oz. Kevlar®/PBI Jumbo Cover Mitt KP310CMJ



22 oz. Kevlar® Cover Mitt K310CM



(for 314 reversible mitt)

HAND PROTECTION

Special Application Gloves & Mitts

High-Temp Gloves

High-Temp Leathers and Fabrics for all weather conditions and rugged applications.

G450KW

Features

- Domestic Green Welding Glove
- Fully lined
- 100% 2-Ply Kevlar® Knit Wrists may be attached to any welding glove to prevent slag and sparks from entering cuff



ARTH7517WL

Features

- Aluminized Back with Brown Thermoleather Palm, "Scarving" Glove
- Reinforced Palm and Knuckle Strap
- Wool lined
- 17" Length
- Flared Cuff Opening with Hook and Loop Closure for Extra Arm Protection
- Sized: L



TH22XFWL

Features

- Imported Heavyweight Brown Thermoleather
- Clute Pattern
- Fully lined with Heavyweight Wool
- 15" Length
- 3/4" Thumbstrap and Pulse Patch
- Sized: L



TIG Welding Gloves

2106



Features

- Grain Pigskin
- Gunn Pattern
- Sewn with Kevlar Thread

**BEST
SELLING TIG**

2107



Features

- Doeskin Palm and Side-Split Cowhide Back
- Cowhide Cuff

2070



Features

- Grain Pigskin
- Gunn Pattern
- Straight Thumb
- 3/4" Thumbstrap
- Unlined
- 4" Split Leather Cuff
- Sized: M, L

2101



Features

- Grain Doeskin (Capeskin)
- 2" Split Leather Cuff
- Gunn Pattern
- Straight Thumb
- Sized: S-XL

2102



Features

- Grain Doeskin (Capeskin)
- 4" Split Leather Cuff
- Gunn Pattern
- Straight Thumb
- Sized: S-XL

2103



Features

- Deer Split Leather
- 2" Cowhide Cuff
- Gunn Pattern
- Straight Thumb
- Unlined
- Sized: S-XL

2104



Features

- Deer Split Leather
- 4" Cowhide Cuff
- Gunn Pattern
- Straight Thumb
- Unlined
- Sized: S-XL

Driver's Gloves

220E



Features

- Gold Elkskin
- Elastic Wrists
- Sized: S-XL

2052



Features

- Grain Cowhide
- Elastic Wrists
- Sized: S-XL

2054



Features

- Grain Cowhide, Split Leather Back
- Elastic Wrists
- Sized: S-XL

HAND PROTECTION

Special Application Gloves & Mitts

Made with Top-Grade Select Side & Shoulder Split Leathers. All of Stanco's Welding Gloves are sewn with Kevlar® thread.



High-Quality Welding Gloves

2001



Features

- Wide Thumbstrap • Wing Thumb
- Foam lined • Sized: L

2002



Features

- Wide Thumbstrap • Seamgard
- Straight Thumb • Pulse Patch
- Foam lined • Sized: L

2020



Features

- Our Best Seller!
- Straight Thumb with 3/4" Thumbstrap
- Fully Welted • Sized: L

2012



Features

- Wide Thumbstrap • Seamgard
- Wing Thumb • Foam lined
- Sized: L

300AR



Features

- Aluminized Rayon Back and Thumb to Reflect Radiant Heat • Cowhide Palm
- Fleece lined • Sized: L

300ARF-3BP



Features

- Aluminized Rayon Back Welding Glove
- Wool lined • Aluminized Snap-On Pad, 7 1/2" x 9 1/2" • Pad may be ordered separately under part # 3BP
- Glove may be ordered separately

2007



Features

- Wide Thumbstrap • Wing Thumb
- Foam lined • Sized: L

2017



Features

- Sized for the smaller hand • Fleece/cotton lined • Wing Thumb
- Welted Seams • Sized: M

450-18



Features

- Wide Thumb • Welted Seams
- Cotton/fleece lined • 18" Length
- Sized: L

High-Quality Welding Gloves

2010



Features

- Wide Thumbstrap • Wing Thumb
- Foam lined • Sized: L

2018



Features

- Wide Thumbstrap • Wing Thumb
- Fleece lined • Welted Seams
- Sized: L

850



Features

- Gold Elkskin Welding Glove • Insulated Back with Unlined Palms • Welted Seams with Thumbstrap
- Sized: S-XL

750



Features

- Elkskin Welding Glove • Insulated Back with Unlined Palms • Welted Seams with Thumbstrap • Sized: S-XL

2025



Features

- Pearl Grey with Black Welting
- Wing Thumb • Cotton/fleece lined

757



Features

- Elkskin Welding Glove • Seamless Index
- Double Palm to Index • The Pipeliner Welding Glove • Unlined for dexterity
- Pulse Patch on Cowhide Cuff
- Sized: S-XL

SPECIAL APPLICATION PROTECTION



Protective Clothing

Great for handling glass!

KTW36B



Features

- 24" x 36" Bib Apron
- 100% Kevlar® Twill

KTW624GR-27



Features

- "Surgical Style" Reverse Entry Gown
- 100% Kevlar® Twill
- 1-Ply Aluminum Eyelets provide Ventilation and Protection
- 8.5 oz. per square yard
- Specify Sleeve Length: 23", 25", 27", 29", 31", 35", or 37"

KTW630



Features

- 30" Coat
- 100% Kevlar®/Aramid Twill
- Unlined
- Fabric Weight 8.0 oz. per square yard

KTW23E



Features

- 23" Sleeve with Elastic on Both Ends
- 100% Kevlar® Twill
- Also Available in 18"

KTW9BC



Features

- Wristlet with Thumb slot and Hook and Loop Closure
- 9" in Length, also Available in 7" Lengths
- 2-Ply Kevlar®
- Available in S-XL

K1816BPVC



Features

- 24" x 26" Split-Leg Waist Apron
- Snaps to KTW624GR Gown

K2426SLVC



Features

- 18" x 16" Kevlar® Aramid Belly Patch with Hook and Loop Attachment

Eyelet Ventilated Sleeves

Sleeves are Superior for Glass Worker Protection

KTW31GR



Features

- 1-Ply 100% Kevlar® Twill
- 8 oz.
- Also Available in 33" & 29"

CD2P31GR



Features

- 12-Ply Canvas Fabric, 9 oz.
- Non-FR
- Also Available in 33" & 29"

FR2P31GR



Features

- 2-Ply FR Green Cotton, 9 oz.
- Also Available in 33" & 29"

Tuffweld® Protective Welding Clothing

Superior Resistance to Metal Splatter and Pin-holing. 20% Lighter than FR Cotton. Provides Exceptional Wicking Capability. A Lightweight Blend of Kevlar® and Lenzing™ FR Rayon.

TW8630



Features

- 24" x 36" Bib Apron

TW8630B



Features

- 30" Coat with Collar and Inside Pocket

TW8601



Features

- Cape Sleeve with Collar and Snaps
- Bib Not Included

TW818E



Features

- 18" Sleeves with Elastic on Both Ends

TW820



Features

- 20" Bib for TW8-601
- Also Available in 14" (TW8-14)

SPECIAL APPLICATION PROTECTION



WELDING



HIGH HEAT
ABRASION
RESISTANCE



MOLTEN METAL

PBI/Kevlar® Gloves & Mittens

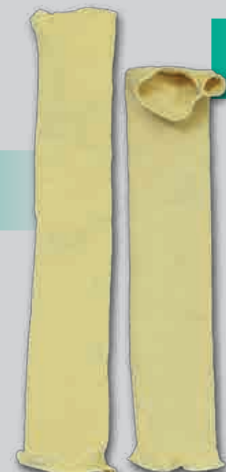
2-Ply 100% Kevlar® knit material. Cut and burn resistant with good shape memory after repeated use.



KK10

Features

- 10" Sleeves
- Available in:
14" (KK14)
16" (KK16)
18" (KK18)



KK18TS

Features

- 10" Sleeves
- Available in:
14" (KK14)
16" (KK16)
18" (KK18)

Thumbslot available in all styles, add "TS" to part number.

Chain Saw Chaps

Made from multi-layered Kevlar® with Cordura outer shell. Inner pad is designed to clog and block cutting chain. Additional protection is provided if pad material is pulled into the drive sprocket.

Chain Saw Chaps KCN511-28



Features

- 28" Length Chap
- Also available in 32", 36" or 40"
- 6-Ply-Protection

2-Ply Nylon Cane Mesh Sleeves

Another source of protection that is perfect for glass workers!

CMW9VC

Features

- 9" Sleeves
- 2-Ply Protection with hook and Loop closure
- Available in 9" Black (CMB9VC), 7" Black (CMB7VC) or 7" White (CMW7VC)



CMW23ADJ



Features

- Full Arm Protection
- 2-Ply Soft Nylon Mesh
- 23" Length with Adjustable Elastic

Miscellaneous Specialized Clothing

Other Garments are available in Vinex® Material

FR9681



Features

- Coverall Made From 8.5 oz. Vinex® Blend Fabric
- Protection Against Molten Aluminum Splash

ORFR624VRT



Features

- FR Cotton Vest with Reflective Tape 18" (KK18)

**Westex
Vinex®**

AL14630VRT



Features

- 30" Unlined Coat with Inside Pocket
- 100% Treated 14 oz. Cotton Denim
- Protection Against Molten Aluminum Splash

Blue Denim Protective Clothing

Made from high-quality, heavyweight blue denim. Non flame resistant

BD2936



Features

- 29" x 36" Bib Apron with No Pockets
- Available in 42" Length (BD2942)
- Can be Customized with Numerous Pocket Configurations

BD23E



Features

- 23" Sleeves with Elastic at Both Ends
- 100% Blue Cotton Denim

Delux Respirator Bags

Delux Respirator Bags are sewn with Kevlar® thread to provide maximum durability.

VRB774B

Features

- 7" x 7" x 4" Vinyl Respirator Bags
- Flame/Moisture/Chemical Resistant



VRB774Y

Features

- 7" x 7" x 4" Vinyl Respirator Bags
- Flame/Moisture/Chemical Resistant



SPECIAL APPLICATION PROTECTION

How to Order a Welding Blanket:

Example: FiberGlass Blanket, 18 oz., 6’ X 6’, White

Material	Material Weight	Blanket Size	Color
G	18	66	W

G1866W
Resulting Part Number

Material Codes

- G, FiberGlass
 - SI, Silica
 - CF, Carbon Felt
- Color Codes
- W, White
 - Y, Yellow
 - R, Bull Dog Red
 - OR, Orange
 - B, Bronze (Silica) or Black (Carbon Fiber)

Roll Goods

Part #	Material	Weight: Ounce/Sq. Yd.	Roll Width	Characteristics
G1840W	Fiberglass	18 oz.	40” x 50 yds.	1,000°F Melt Temp; Light-Duty; Vertical Plane Protection Only; White Color
G1860W	Fiberglass	18 oz.	60” x 50 yds.	1,000°F Melt Temp; Light-Duty; Vertical Plane Protection Only; White Color
G2440Y	Neoprene-coated Fiberglass	24 oz.	40” x 50 yds.	1,000°F Melt Temp; Medium Heavy-Duty; Abrasion, Spark, and Splatter Resistant; Yellow color
G2460Y	Neoprene-coated Fiberglass	24 oz.	60” x 50 yds.	1,000°F Melt Temp; Medium Heavy-Duty; Abrasion, Spark, and Splatter Resistant; Yellow color
G1638R	Acrylic-coated Fiberglass	16 oz.	38” x 50 yds.	1,000°F Melt Temp; Light-Duty; Oil, Water, and Abrasion Resistant; Bull Dog Red Color
G1660R	Acrylic-coated Fiberglass	16 oz.	60” x 50 yds.	1,000°F Melt Temp; Light-Duty; Oil, Water, and Abrasion Resistant; Bull Dog Red Color
G3240OR	Fiberglass	32 oz.	40” x 50 yds.	1,200°F Melt Temp; Heavy-Duty; General Purpose Welding; Orange Color
SI-1836B	Silica	18 oz.	38” x 50 yds.	3,000°F Melt Temp; Heavy-Duty; Slag & Molten Metal; Bronze Color
CF-1700B	Carbon Felt	17 oz.	60” x 50 yds.	Protects to 3,000°F; Heavy-Duty, Scratch-Resistant; Black Color

Available in a variety of flame and heat resistant materials to fit a variety of applications. All hems are turned and double stitched with 100% heavy Kevlar® thread. Grommets are spaced on 24” centers and 3/8” O.D. brass plated

Roll Goods & High-Heat Blankets



Stanco Specializes in Custom Projects... If We Don't Have What you Need, We'll Make it!



Over 1,000 feet of Leather Cable Cover

Product Customization

We welcome the opportunity to work with you on the development of new products. Send us your specification and/or a sample (if available) and we will design a product to meet your needs. Custom and special items are proprietary and handled in confidence.



Sew-On Labels

Special Printing and Sew-On labels

Several methods of applying emblems are available: Heat Transfer, Die Embossing, Embroidery and Silk Screen. A variety of sizes and colors are available. Send in your artwork and dimensions for accuracy.



Various Reflective Tape Options

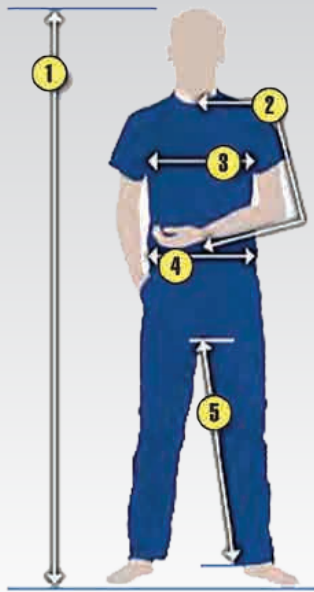
Reflective Tape

Sew-On Reflective Tape for highvisibility is available for all garments. Available in a variety of colors and widths. Reflective Tape can be sewn directly on to any garment in any location.

— Minimum order quantities apply to all custom orders —

For a correct fit follow these directions

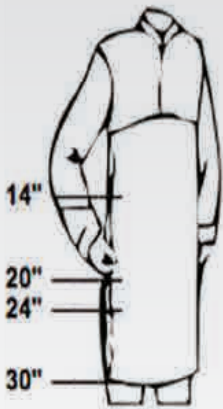
- Always have someone else take the measurements
- Hold tape straight and snug, but not tight
- If the measurements fall between two sizes, order the larger size



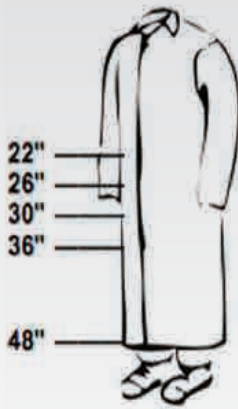
- 1. Height:** Measure the height from the top of your head to ground level beside the feet, without shoes.
- 2. Sleeve:** Measure from the middle of the back of the neck to the elbow point and then to the wrist bone for the correct size.
- 3. Chest:** Measure just under the arms and around the fullest part of the chest.
- 4. Waist:** Measure around the waist (or belt line), and the number of even inches measured is the correct size.
- 5. Inseam:** Measure a pair of well fitting pants along the inside seam from the crotch to the bottom of the hem.

Coveralls, Bib Overalls, Jackets, Shirts, Cape Sleeves, & Coats								
Alpha Size	S	M	L	XL	2XL	3XL	4XL	5XL
Chest Size	34-36"	38-40"	42-44"	46-48"	50-52"	54-56"	58-60"	62-64"
Height	Short = 5'6" and under, Tall = 6'1" - 6'3" (only applies to coveralls & bib overalls)							

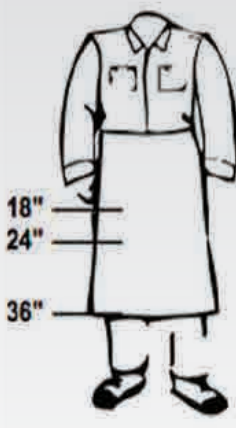
Jeans & Pants	
Waist sizes: 28-54"	
Inseam: 30-36"	
Standard Inseam: 32"	



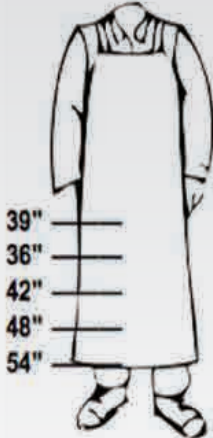
BIB LENGTHS



JACKET / COAT LENGTHS



WEIST APRON LENGTHS



BIB APRON LENGTHS



Today, there are many options for high quality flame-resistant apparel, protective workwear and industrial safety products. Stanco Safety Products brings all these together in one simple package. With manufacturing capabilities in the United States, as well as in Mexico, China, and the Middle East, we can deliver products that match both quality and budget requirements.

We are proud to be a major US provider of flame-resistant workwear, engineered to satisfy the safety certification standards for a wide range of protective apparel and safety accessories.

We also offer contract services, including customized garments and accessories.

Our goal has always been to create long-term relationships with our customers based on the principles of offering quality products at fair prices, a high level of product innovation and excellent customer service. Stanco Safety Products is an excellent partner for any company that has a need for our product mix and a desire to develop a strong and long-lasting relationship with a quality FR workwear provider.

As we celebrate 30 years in providing safety work-wear to industry, we'd like to thank our customers for their business and for their continued loyalty.

Mark E. Stanley – President
Kevin P. Highland – Vice President Sales



Liability Statement and Disclaimer of Warranties
The products described and illustrated in this catalog and our website are warranted against defects in the manufacturing process only. As all applications vary, a "Use Warranty" is not implied or intended. The buyer should carefully analyze the environment in which the products are to be used to determine if they provide adequate protection.

Privacy Statement
Stanco Manufacturing Inc. manufactures a variety of Flame Resistant Clothing and Personal Protective Equipment (PPE). Our Privacy Statement covers Stanco Manufacturing Inc. and its content.

Return Policy
We discourage the return of products. However, we will consider the return provided:

- The products are catalog items
- The products are in saleable condition (not soiled or used)
- The products were purchased within a 30-day period of time from the request date

A Return Goods Authorization (RGA) number from a Customer Service Representative must be obtained, and the freight prepaid back to our warehouse. There will also be a 25% re-stocking charge for all authorized returned goods. Custom and special products may not be returned.

Delivery Lead-Time
It is our intention to provide you with accurate lead times. However, if the products you request are needed sooner, our customer service staff will certainly be glad to work with you. We will always commit to firm delivery dates.



Standing between you and danger for thirty years.



www.hylec.com.au Phone +61 (07) 3396 2220 Email askhylec@hylec.com.au