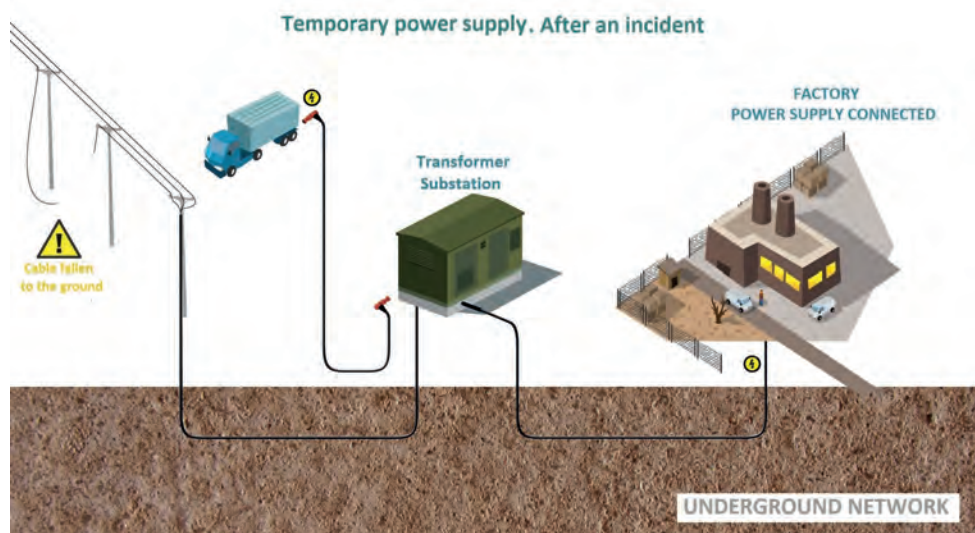


SHUNT AND REPOWERING



SHUNT AND REPOWERING

Introduction	234
Shunt cables	234
Connectors	236
Clips, prick wires, adapters.	238
Connection devices for fuse holder.	243
Sockets and boxes.	244
Cable reels	249
Cable protector	250
Complementary accessories.	251



Introduction

ENSURE CONTINUITY OF ELECTRICAL NETWORK AFTER AN INCIDENT OR DURING MAINTENANCE OPERATIONS

Technical specifications: The system has been designed to create a temporary electrical connection between a power source and the customer. The LV By-pass system is composed with a large range of accessories and adapters to ensure the re powering to electrical network in any case.

This is a modular and flexible system to connect anywhere with :

- Cable with different standard connection (M8 thread – M12 thread – Lug - or specific connector on customer request)
- Clamps
- Junction box
- Adapter
- Temporary box (switch box – derivation box – etc)
- Socket
- Etc

Shunt cables



TW4035

M8/M8 FLEXIBLE SHUNT CABLE - 35 MM²

Technical specifications: 1000 V

200A AC

Shunt cable male M8 / male M8.

35 mm² H07RNF cable type.

Protective cap included.

Ref.	Cable length (m)
TW4035-00.5	0,5
TW4035-01	1
TW4035-02	2
TW4035-03	3
TW4035-04	4
TW4035-05	5
TW4035-06	6
TW4035-10	10
TW4035-15	15
TW4035-20	20
TW4035-25	25

Other lengths available on request.

Shunt cables

Type of network: LV  MV  HV 

TW4050

M8/M8 FLEXIBLE SHUNT CABLE - 50 MM²

Technical specifications: 1000 V

250A AC

Shunt cable male M8 / M8.

50 mm² HO7RNF cable type.

Protective cap included.



Ref.	Cable length (m)
TW4050-005	0,5
TW4050-01	1
TW4050-02	2
TW4050-03	3
TW4050-04	4
TW4050-05	5

Other lengths available on request.

TW4120 series

M12/M12 FLEXIBLE SHUNT CABLE - 120MM²

Technical specifications: 400A AC

Shunt cable right angled male M12 / M12.

120 mm² HO7RNF cable type.

Connector with retractable sleeve.

Protective cap included.



Ref.	Cable length (m)
TW4120-02	2
TW4120-04	4
TW4120-05	5
TW4120-15	15
TW4120-20	20
TW4120-45	45

Other lengths available on request.

TW4130

M12/LUG Ø14 FLEXIBLE SHUNT CABLE

Technical specifications: 1000 V

400A AC

Shunt cable right angled male M12 / lug Ø14.

120 mm² HO7RNF cable type.

Connector with retractable sleeve.

Protective cap included.



Ref.	Cable length (m)
TW4130-01	1
TW4130-02	2
TW4130-03	3
TW4130-04	4
TW4130-05	5
TW4130-10	10
TW4130-20	20

Other lengths available on request.



TW2410

DIY M8 CONNECTOR - 35 MM²

Technical specifications: 1000 V

200A AC

Do It Yourself connector :

M8 straight connector, to be crimped.

For 35 mm² H07RNF cable type.

Ref.	Current
TW2410	200 A AC



TW2411

DIY M8 CONNECTOR - 50 MM²

Technical specifications: 1000 V

250A AC

Do It Yourself connector :

M8 straight connector, to be crimped.

For 50mm² H07RNF cable type.

Ref.	Current
TW2411	250 A AC



TW2415

M12 INSULATED RIGHT ANGLE CONNECTOR

Technical specifications: 1000V AC maximum voltage

400A AC maximum current

Suits to 120 mm², 185 mm² or 240 mm² H07RNF (depending on the model)

Removable protecting cap

Retractable sleeve

M12 connector (M12 threaded terminal) to connect to M12 socket

IP2X protection (touch-protected)

Ref.	Current	For cables
TW2415-120	400A AC	120 mm ²
TW2415-185	400A AC	185 mm ²
TW2415-240	400A AC	240 mm ²

Connectors

Type of network: LV  MV  HV 

TW2417

M16 INSULATED RIGHT ANGLE CONNECTOR

Technical specifications: 630 A AC maximum current
1000 V AC maximum voltage
Suits to 185 mm² or 240 mm² H07RNF cable (according to the model)
Removable protecting cap
Retractable sleeve
M16 connector (M16 threaded terminal) to connect to M16 socket
IP2X protection (touch-protected)



Ref.	For cables
TW2417-185	185 mm ² H07RNF
TW2417-240	240 mm ² H07RNF

Innovation !

TW2418

M12 INSULATED RIGH ANGLE CONNECTOR

⊕ Suits stripped aluminium or copper cables from 25 to 95 mm².

Technical specifications:
230V AC maximum voltage
200A AC maximum current
Removable protecting cap
Retractable sleeve
M12 connector (M12 threaded terminal) to connect to M12 socket
To be used with rigid aluminium or copper cables
Insulation in conformity with standard UL94V0
IP2X protection (touch-protected)



Ref.	Current	Weight (g)
TW2418	400A AC	450

TW2421

M12 INSULATED RIGHT ANGLE CONNECTOR

Technical specifications: 1000 V
250A AC
M12 insulated right angle connector.
For male M8 threaded connector (35 mm² and 50 mm² shunt).
Protective cap included.



Ref.	Current
TW2421	250 A AC

**TW2380****ADAPTER M8 FEMALE / M12 FEMALE**

Technical specifications: 1000 V
200A AC

Adapter M8 female / M12 female for threaded connector.
Tightening with Allen wrench 5mm.

Ref.	Current
TW2380	200 A AC

**TW2381****ADAPTER M8 MALE / M12 FEMALE**

Technical specifications: 1000 V
200A AC

Adapter M8 male / M12 female for threaded connector.
Tightening with Allen wrench 5mm.

Ref.	Current
TW2381	200 A AC

**TW2382****ADAPTER M12 FEMALE / D13MM LUG**

Technical specifications: 400A AC
Adapter M12 female / Ø13 mm lug.
For M12 male threaded connector.

Ref.	Current
TW2382	400 A AC

**TW2383****ADAPTER M12 FEMALE / D12MM FORK**

Technical specifications: 1000 V
400A AC
Adapter M12 female / Ø 12mm fork.
For M12 male threaded connector.

Ref.	Current
TW2383	400 A AC



Clips, prick wires, adapters

Type of network: LV  MV  HV 

TW2384

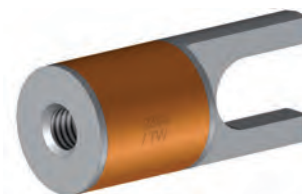
ADAPTER M12 FEMALE / D18MM FORK

Technical specifications: 1000 V

400A AC

Adapter M12 female / Ø18 mm fork.

For M12 male threaded connector.



Ref.	Current
TW2384	400 A AC

TW2385

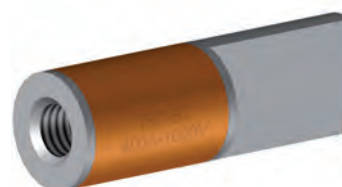
ADAPTER M12 FEMALE / PLATE LUG

Technical specifications: 1000 V

400A AC

Adapter M12 female / plate lug 5mm thickness.

For M12 male threaded connector.



Ref.	Current
TW2385	400 A AC

TW2386

ADAPTER M12 FEMALE / D15MM LUG

Technical specifications: 1000 V

400A AC

Adapter M12 female / d15mm lug.

For M12 male threaded connector.



Ref.	Current
TW2386	400 A AC

TW2387

ADAPTER M12 FEMALE / M12 FEMALE

Technical specifications: 1000 V

400A AC

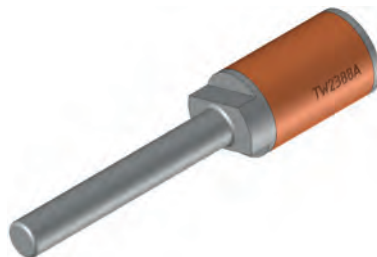
Adapter M12 female / M12 female.

For M12 male threaded connector.



Ref.	Current
TW2387	400 A AC





TW2388

ADAPTER FOR INSULATION PIERCING CONNECTOR

Technical specifications: 1000V AC

400A AC

M12 thread to Ø 10 mm for insulating piercing aerial connectors K341 and K342.

M12 thread to Ø 15.5 mm for insulating piercing aerial connectors K343.

Ref.	Current	Version
TW2388A	400A AC	for insulation piercing connector K341 and K342
TW2388B	400A AC	for insulation piercing connector K343



TW2010

WIRE-PRICKING TERMINAL TECHNOMIC

Use: Use TW2010 to get the electrical potential of wires whose you can not access the ends and without stripping them.

The TW2010 pierces the jackets of wires by its tip to touch the inner conductors.

- Fit Technopic to the size of the wire you want to check.
- Hook Technopic on the wire.
- Screw the handle until the tip reaches the strands.
- Connect the 4 mm banana female socket to your measuring device.
- Your measuring device is linked to the inner conductors of the wire.

Technical specifications: • IP2X-protected (touch-protected) 4 mm banana female socket for voltage checking

- 1000 V AC maximum voltage
- Pricks wires from 10 mm² up to 300 mm²
- IP2X-protected insulating handle
- Stainless steel tip
- Maximum current : 5A max (1000W under 230V)

Ref.	Description
TW2010	Wire-pricking terminal TECHNOMIC

Also available with 4 mm socket in different colors (Red, White, Blue, Yellow, Black, Green, Yellow / Green, Brown, Purple).



TW2134 - TW2135

INSULATED CLIPS

Technical specifications: 1000 V

800A AC (2 x 400A)

Insulated clip 800A (2 x 400A) for bus bars.

Front hook to clamp power bar

For vertical bus bar (max thickness 35 mm) or horizontal bus bar (max thickness 18 mm, max width 55 mm).

Socket for threaded male M12 connector.

Test point for 4 mm safety plug.

IP2X protection (touch-protected)

Ref.	Version	Current
TW2134	Compact (393 mm)	800 A AC (2 x 400 A)
TW2135	Long (525 mm)	800 A AC (2 x 400 A)

TW2136 - TW2137

INSULATED CLIP

⚡ Stackable plug Ø 4 mm for potential test point.

Technical specifications: 1000 V

400A AC

Insulated clip 400A for bus bars.

For vertical bus bar (max thickness 35 mm) or horizontal bus bar (max thickness 18 mm, max width 55 mm).

Socket for threaded male M12 connector.

Test point for 4mm safety plug.



Ref.	Version	Current
TW2136	Long (525 mm)	400 A AC
TW2137	Compact (393 mm)	400 A AC

TW2162

HEXAGONAL SHUNT CLIP

⚡ Stackable plug Ø 4 mm for potential test point.

Technical specifications: 1000 V

200A AC

Insulated shunt clip for 17 & 19 mm hexagonal tightening.

Socket for threaded male M8 connector.

Test point for 4 mm safety plug.



Ref.	Current
TW2162	200 A AC

TW2164

SHUNT CLIP FOR FLAT BUS BAR

⚡ Automatically retractable protective sleeve.
Stackable plug Ø 4 mm for potential test point.

Technical specifications: 1000 V

200A AC

Insulated shunt clip for tightening on flat bus bar : 2 to 25 mm.

Socket for threaded male M8 connector.

Test point for 4mm safety plug.



Ref.	Current
TW2164	200 A AC



TW2165

SQUARE-END OR ROUND-END SHUNT CLIP

⊕ Stackable plug Ø 4 mm for potential test point.

Technical specifications: 1000 V

200A AC

Insulated shunt clip for tightening on square-end (9-10mm) or round-end (8-12mm).

Socket for threaded male M8 connector.

Test point for 4mm safety plug.

Ref.	Current
TW2165	200 A AC



TW2167

SHUNT CLIP FOR STRIPPED CABLE

⊕ Automatically retractable protective sleeve.
Stackable plug Ø 4 mm for potential test point.

Technical specifications: 1000 V

200A AC

Insulated shunt clip for tightening on stripped cable 35-240mm².

Socket for threaded male M8 connector.

Test point for 4mm safety plug.

Ref.	Current
TW2167	200 A AC



TW2168

PRICK WIRE SHUNT CLIP

⊕ Automatically retractable protective sleeve.
Stackable plug Ø 4 mm for potential test point.

Technical specifications: 1000 V

200A AC

Insulated prick wire shunt clip for cable 35 - 240 mm².

Socket for threaded male M8 connector.

Test point for 4 mm safety plug.

Ref.	Current
TW2168	200 A AC



TW2170

MICRO-CLAMP MUTLI-POSITION, MULTI-CONTACT, 200 A

Use: Multi-support connecting clamp for shunt & repowering, earthing and short-circuiting.

Technical specifications: Clamp with double rotation.

200 A AC maximum current.

1000 V AC maximum voltage.

Tightening jaws to grasp :

- hexagonal heads of bolts 10mm
- vertical or horizontal round bar Ø 6mm to Ø 12mm
- power bar horizontal or vertical flat 5mm thick
- rod Ø 10mm in the axis of the clamp

M8 threaded hole socket to connect to M8 connector.

Rear 4 mm banana female test point for voltage checking.

Ref.	Current
TW2170	200 A AC

Clips, prick wires, adapters

Type of network: LV  MV  HV 

TWBP4067-015

BY-PASS JUMPER

Technical specifications: 1000 V
200A AC

BY-PASS Jumper composed of :

- 1 lead type TW4035-015, cable type H07RNF 35 mm², length 1,5m
 - 2 clips type TW2167, cable tightening
- Test point for 4mm safety plug.

Other configurations available on request.



Ref.	Current
TWBP4067-015	200 A AC

Connection devices for fuse holder

TW2350F

CONNECTION DEVICE FOR FUSE HOLDER

Technical specifications: 1000 V

60A AC

Re-powering device.

Temporary connection on clamping jaws of the fuse holder.

NH00 type.

Fuse holder 60A.



Ref.	Current
TW2350F	60A AC

TW2351F

CONNECTON DEVICE FOR FUSE HOLDER

Technical specifications: 1000 V

60A AC

Re-powering device.

Temporary connection on clamping jaws of the fuse holder.

Type 22x58.

Fuse holder 60A.



Ref.	Current
TW2351F	60A AC

TW2350

CONNECTION DEVICE FOR FUSE HOLDER

Technical specifications: 1000 V

60A AC

Re-powering device.

Temporary connection on clamping jaws of the fuse holder.

NH00 type.



Ref.	Current
TW2350	60 A AC



TW2351

CONNECTION DEVICE FOR FUSE HOLDER

Technical specifications: 1000 V

60A AC

Re-powering device.

Temporary connection on clamping jaws of the fuse holder.

Type 22x58.

Ref.	Current
TW2351	400 A AC



TW2392

ADAPTER FOR FUSE HOLDER

Technical specifications: 1000 V

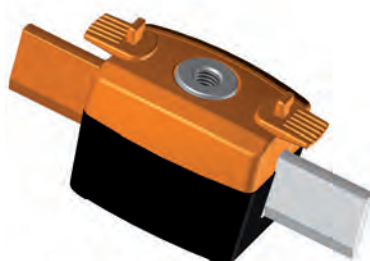
400A AC

Adapter for fuse holder, insulated on one side, for Low Voltage panels and network cabinet.

Centre distance 115 mm.

Socket for threaded male M12 connector.

Ref.	Current
TW2392	400 A AC



TW2393

ADAPTER FOR FUSE HOLDER

Technical specifications: 1000 V

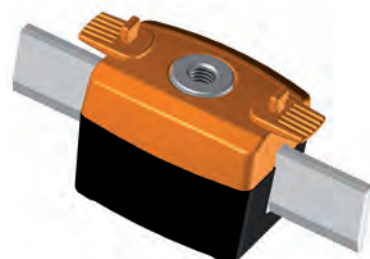
400A AC

Adapter for fuse holder, insulated on one side, for Low Voltage panels and network cabinet.

Centre distance 115 mm.

Socket for threaded male M12 connector.

Ref.	Current
TW2393	400 A AC



TW2394

ADAPTER FOR FUSE HOLDER FULLY CONDUCTIVE

Technical specifications: 1000 V

400A AC

Adapter for fuse holder, conductor on both sides, for Low Voltage panels and network cabinet.

Centre distance 115mm.

Socket for threaded male M12 connector.

Ref.	Current
TW2394	400 A AC



Sockets and boxes

Type of network: LV  MV  HV 

TW2429

INSULATED SOCKET WITH FRAME

Technical specifications: 1000 V

400A AC

Insulated socket with frame, M16 threaded rod, for conducting structure maximum thickness 9 mm ± 0.1 mm.

Socket for threaded male M12 connector.



Ref.	Current
TW2429	400 A AC

TW2430

INSULATED SOCKET

Technical specifications: 1000 V

400A AC

Insulated socket, M16 threaded rod, for conducting structure maximum thickness 9 mm ± 0.1 mm.

Socket for threaded male M12 connector.



Ref.	Current
TW2430	400 A AC

TW2431

M16 FEMALE SOCKET

Technical specifications: 630 A AC maximum current

1000 V AC maximum voltage

M16 threaded hole socket front terminal

Panel fastening by four M6 x 35 screws

Spring loaded insulating cover

Overall dimensions 81 mm x 65 mm x 115 mm

M16 threaded stud and hexagonal nut rear terminal



Ref.	Current	Dimensions (mm)
TW2431	630A AC	115 x 80 x 65



TW2531

JUNCTION BOX 2 SOCKETS

Technical specifications: 1000 V
400A AC

Insulated junction box with 2 sockets.
Socket for threaded male M12 connector.

Ref.	Current
TW2531	60 A AC



TW2532

JUNCTION BOX 4 SOCKETS

Technical specifications: 1000 V
400A AC

Insulated junction box with 4 sockets.
Socket for threaded male M12 connector.

Ref.	Current
TW2532	400 A AC



TW2540 · TW2541

SCREW AND SOCKET EXTENSION BOX

Technical specifications: 400A AC maximum current
1000V AC maximum voltage

One M12 threaded hole socket to connect to M12 connectors

Model TW2540 : One screwing terminal for stripped aluminium or copper wires from 50 mm² up to 240 mm²

Model TW2541 : One screwing terminal for stripped aluminium or copper wires with a round lug width of 32 mm maximum and Ø 14 mm hole

IP2X protection (touch-protected)

Ref.	Version	Current
TW2540	One screwing terminal for stripped aluminium or copper wires from 50 mm ² up to 240 mm ²	400A AC
TW2541	One screwing terminal for stripped aluminium or copper wires with a round lug width of 32 mm maximum and Ø 14 mm hole	400A AC

Sockets and boxes

Type of network: LV  MV  HV 

TW6506

SWITCH BOX

Reinforced structure, professional electrical cabinet.

Technical specifications: 400A AC

Switch box :

Switch to open or close the electrical circuit
1 Input 4 poles 400A / 1 Output 4 poles 400A
For M12 male threaded connectors.
4 mm test point on every socket.

Frame mounted on wheels.



Ref.	Current
TW6506	400 A AC

TW6507

HEAD END PROTECTION BOX

Technical specifications: 400A AC

Head end protection box :

1 Input 4 poles 400A / 1 Output 4 poles 400A.
4 fuses 400 A AC to protect 3 phases and neutral.
1 x 220V AC output protected with circuit-breaker.

For M12 male threaded connectors.
4 mm test point on every socket.

Frame mounted on wheels.



Ref.	Current
TW6507	400 A AC

TW6508

DERIVATION BOX

Reinforced structure, professional electrical cabinet.

Technical specifications: 400A AC

Temporary derivation box :

1 Input 4 poles 400A / 1 Output 4 poles 400A.
2 derivation 4 poles 250A equipped with circuit-breaker.
1 x 220V AC output protected with circuit-breaker.

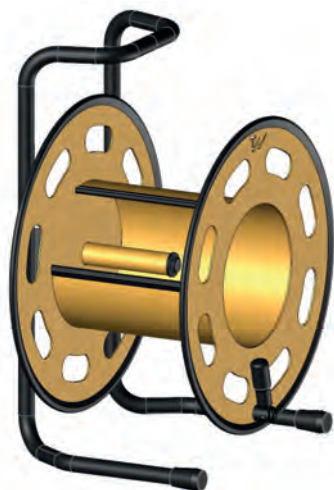
For M12 male threaded connectors.
4 mm test point on every socket.

Frame mounted on wheels.



Ref.	Current
TW6508	400 A AC





TW8326

MANUAL REEL

⊕ The central hub allows to fit the first cable extremity.

Technical specifications: Manual reel, delivered without cable.

Made in France.

Ref.	Dimensions (mm)
TW8326	520 x 390 x 300



TW8327 - TW8328

MANUAL REEL MOUNTED ON WHEELS

⊕ The central hub allows to fit the first cable extremity.
Trolley type : telescopic handle and wheels

Technical specifications: Max capacity : 25 metres 120 mm² H07RNF

Winding handle.

Delivered without cable.

Made in France.

Ref.	Application	Dimensions (mm)
TW8327	Industry	515 x 390 x 345
TW8328	Construction site	515 x 390 x 345



Cable reels

Type of network: LV  MV  HV 

TW8420

MOTORIZED REEL 4 X 45 - 120 MM²

Technical specifications: Motorised system.

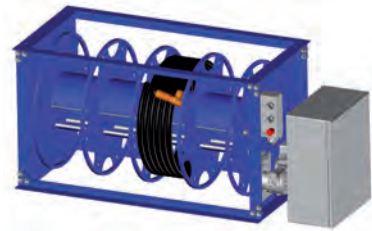
Rolling and unrolling activated by foot.

For extra-flexible copper cable 120 mm².

Max length 45 m for each cable.

4 cable reels on frame.

Capacity : 4 x 45 m.



Ref.	Capacity
TW8420	4 x 45 m

TW8425-14

MOTORIZED REEL 14 X 25 - 120 MM²

Technical specifications: Motorised system.

Rolling and unrolling activated by foot.

For extra-flexible copper cable 120 mm².

Max length 25 m for each cable.

14 cable reels on frame.

2 drums of 7 reels each.

Capacity: 14 x 25 m.



Ref.	Capacity
TW8425-14	14 x 25 m

TW8445

MOTORIZED REEL 12 X 45 - 120 MM²

Technical specifications: Motorised system

Rolling and unrolling activated by foot.

For extra-flexible copper cable 120 mm².

Max length 45 m for each cable.

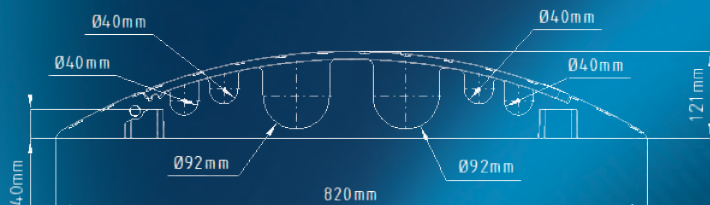
12 cable reels on frame.

Capacity: 12 x 45 m.

Other configurations available on request.



Ref.	Capacity
TW8445	12 x 45 m

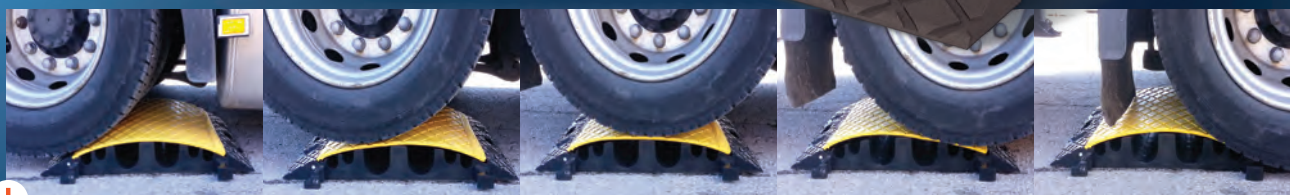
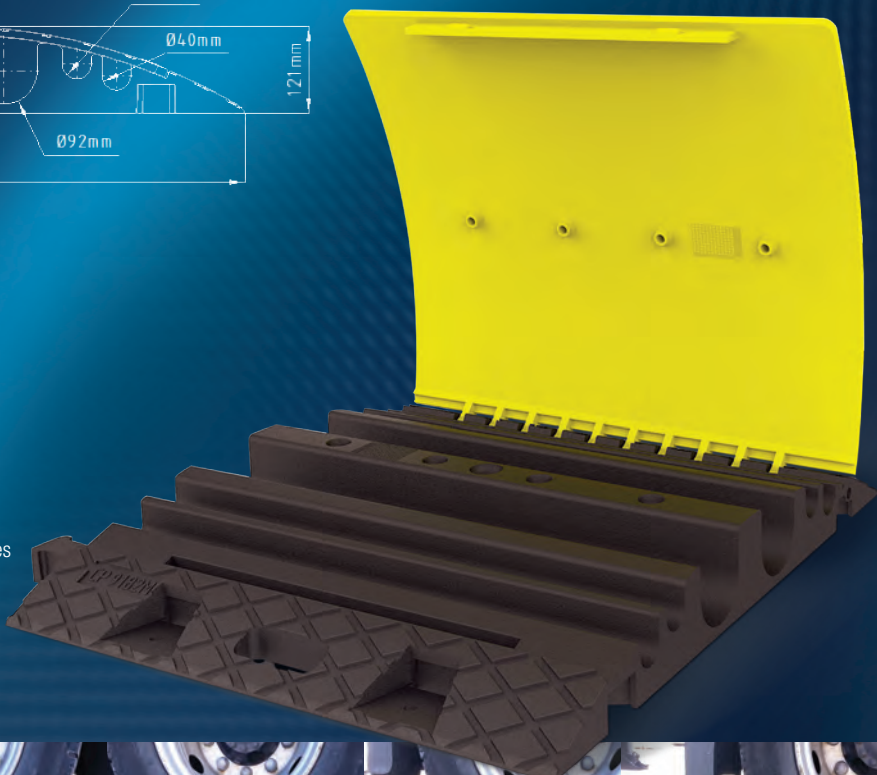


TW9182M

HIGH STRENGTH CABLE PROTECTOR

Use :

We offer the choice between three temperature classes precisely suited for the climate conditions of the installation site : temperate, desert and polar.



> **HIGH STRENGTH** : very high mechanical strength

High temperature resistance up to 60° ambient temperature (for Z01 model)

Technical specifications :

- 4 slots for cables or pipes up to diam. 40 mm
- 2 large slots for cables or pipes up to diam. 90 mm
- High resistance to mechanical stress (tank transporters, tanker lorries up to 44 tonnes)
- Adapted to extreme temperatures depending on specific needs
- High UV resistance
- Adaptable to all types of terrain, including uneven ground
- Low profile: 120 mm
- Ground anchoring hole for long temporary work
- Removable cover for easy maintenance
- Retro-reflective devices (optional)
- Carry handle for easy transport
- Customisation on request (logo, colour)
- Dimensions : 820 x 700 mm

Quick connection system



Ref.	Zone	Weight
TW9182M-Z01	Desert climate	27 Kg
TW9182M-Z02	Polar climate	21,5 Kg
TW9182M-Z03	Temperate climate	27 Kg

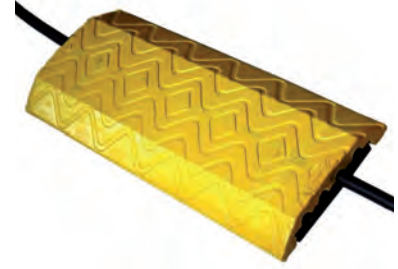
Complementary accessories

Type of network: LV  MV  HV 

TW9120

CABLE PROTECTION

Technical specifications: Cable protection 4 x 120 mm².
Length : 750 mm.



Ref.	Length (mm)
TW9120	750

TW2350-IEC-300-#

4 MM SAFETY MEASURING LEAD

1000V CAT III / 600V CAT IV UPON IEC 61010-031

Technical specifications: 12A

Measuring lead :

Safety 4 mm lead, straight male / right angle male.

PVC 0.75 mm² cable, 12A.

Length : 3 m.

Available colours (#) : red, black, blue, green, yellow, white.

Other configurations available on request.



Ref.	Length (m)
TW2350-IEC-300#	3



A

ABC dry powder fire extinguisher, capacity 9 kg.....	110
ABC powder fire extinguisher.....	92, 108
Accessories for «Tirvit» tensioners.....	485
Adapter for fuse holder.....	244
Adapter for insulation piercing connector.....	240
Adapter for Reel Holder with U end fitting.....	279
Adapter M12 female / d12mm fork.....	238
Adapter M12 female / d13mm lug.....	238
Adapter M12 female / d15mm lug.....	239
Adapter M12 female / d18mm fork.....	239
Adapter M12 female / M12 female.....	239
Adapter M12 female / plate lug.....	239
Adapter M8 female / M12 female.....	238
Adapter M8 male / M12 female.....	238
Adaptors.....	537
Additional earthing and short-circuiting equipment.....	324
Additional earthing equipment.....	323
Adhesive safety tape 100 m.....	445
Adhesive sign - Do not climb on power transformer.....	431
Adjustable spanner ATEX II.....	558
Adjustable electrician face shield with support for helmet.....	10
Adjustable fixed points for vertical or oblique conductors.....	356
Adjustable hook spanner.....	550
Adjustable lockout cable.....	457
Adjustable lockout device for 1/4 turn valve.....	462
Adjustable scoring stylus for peelable semiconductor.....	412, 413
Adjustable spanner.....	596
Adjustable triangular tent.....	576
Adjustable webbing lanyard 2 m.....	72
Air cylinder for SCBA.....	23
All purpose safety lashing system.....	495
Alligator clip for continuity testing.....	399
Alligator clip with 4 mm female banana socket.....	397
All-purpose reeler.....	126
Aluminium alloy connector.....	69
Aluminium alloy snap hook with safety inside latch.....	70
Aluminium cable winch hoist.....	494
Aluminium hook ladder.....	476
Aluminium ladder with working platform.....	473
Aluminium sign «Danger - No entry - Electrical station».....	431
Aluminium stepladder with telescopic feet.....	476
Aluminium strip saw.....	407
Ammeter for Low Voltage single core insulated cables.....	373
Analog 5kV insulation tester.....	377
Anchor chain.....	485
Anchor clamp.....	497
Anchor rod.....	600
Anchor sling.....	485
Anchorage ring.....	67
Anchorage ring, width 44 mm.....	68
Angled fixed ball point.....	343
Anti-panic descender.....	75
Arc flash balaclava - ATPV 24,7 cal/cm².....	12
Arc flash protective garments - daily wear.....	44 to 49
Arc flash protective garments - switching wear.....	51, 52
Ascender.....	74, 75
Association of Light And Detector for Individual protection.....	293
Auto-lock tape measure.....	603
Automatic fall arrester device.....	67

B

Backpack for PPE and tools 25L.....	140
Bag for insulating caps.....	81
Bag for insulating sleeves.....	81
Base for rod.....	440
Battery.....	518, 532

Battery operated crimping tool.....	527 to 530
Battery operated hydraulic cable cutter.....	514 to 517
Battery operated hydraulic power pack.....	533
Battery operated indent crimping tool.....	531
Beanie.....	13
Belt reel for continuity test.....	400
Bending tool for 50 to 300 mm² conductor.....	214
Binoculars.....	605
Block with rolls for ROTO-TMG.....	410
Bonded semiconductor shaving tool.....	415
Borer rod.....	329
Branch pruner.....	276
Branch saw.....	277
Brass cable holders.....	100, 101
Brush for aluminium conductor wire.....	220
Brush for copper or aluminium conductors.....	275
Brush with handle.....	569
Bucket for working at height.....	81, 141
Bypass device for gas soil pipes.....	573
BY-PASS Jumper.....	243

C

Cabinet key.....	580, 581
Cable and phaser identifier for de-energized three phase cables.....	284, 285
Cable Cutter Stick.....	263
Cable drum lifting jacks.....	505
Cable extension.....	127
Cable midspan stripper 10-45 mm.....	408
Cable protection.....	251
Cable protector Road Shell.....	250
Cable reeler 40 m.....	126
Canadian triangular tent.....	576
Cantilever tool box 5-tray.....	134
Canvas bag.....	137
Canvas bag for insulating mats.....	41
Canvas briefcase 17L.....	142
Canvas soft case.....	138
Canvas storage bag for electrician's gloves.....	31
CAP / CAS connections.....	359
Cape chisel.....	571
Car charger.....	311
Carbon dioxide (CO₂) fire extinguisher.....	109
Carrying bag for earthing device.....	345
Carrying case.....	534
Carrying strap for insulating mats.....	41
Chain ratchet cable cutter Ø 50 mm.....	509
Chain sling.....	492
Chalk line marker set.....	603
Charger 220 V - 50Hz.....	311
Charger 220V 18V Li-Ion.....	518, 532
Checking kit.....	311
Chest ascender.....	74
Chisel.....	570
Chisel and point crowbar.....	600
Clamp.....	437
Clamp for by-pass device for gas soil pipes.....	573
Clamping tool for steel strip.....	409, 594
Clamp-on earth resistance tester.....	386
Clamps on insulating sticks for equipotential bonding.....	351
Clamp-type safety wire grip.....	397
Clasp for metal strip.....	594
Classic multi-situation self-contained breathing apparatus.....	22
Clear anti-UV safety glasses.....	14
Climbing iron.....	477, 478
Combination spanner.....	561, 596
Combination spanner ATEX I.....	559
Compact telescopic insulating stick for work at great heights.....	269
Compact voltage detector stick.....	90
Complete earthing and short-circuiting device.....	343

Complete linemen set (electrical distribution).....	54
Complete pulling/lifting winch set.....	505
Composite insulating gloves class with arc flash protection.....	28
Concrete base.....	440
Cone sharpeners.....	416, 421
Connectable insulating sticks made of Ø 32 mm tube.....	258
Connection device for fuse holder.....	243, 244
Container for insulating sleeves.....	80
Continuity tester and reel.....	371
Copper/aluminium bimetallic plates.....	101
Copper/aluminium bimetallic washers.....	101
Cordless drill.....	583
Corrugated sheath cutter Ø 70 - 180 mm.....	427
Cotton fingerless inner gloves.....	29
Cotton inner gloves.....	30
Couplers.....	536, 537
Coupling wrench.....	564
Cradle kit for LV and MV spliced ladders.....	472
Crepe paper.....	84
Crimping pliers.....	520
Crimping pliers 4 to 120 mm ² CU.....	521
Crimping pliers SIMECA SM1 - 6 to 240 mm ² CU.....	521
Crimping tool for uninsulated cable lugs.....	519
Cut resistant gloves with PU coated palm.....	34

D

Danger banners.....	442
DC Bipolar voltage detectors, range 500 / 3.600 V DC.....	294
Demarcation tape in coated fabric.....	445
Derivation box.....	247
Detection mesh for buried cables.....	437
Diagonal cutting pliers ATEX II.....	547
Dielectric overboots.....	39
Digital clampmeter.....	380
Digital insulation tester.....	376
Digital multimeter.....	379
Digital/analog insulation and continuity tester.....	374
Discharge stick.....	271
Disconnected cable and phase vocal identifier, network map checker.....	282
Disposable earplugs 37 dB.....	18
Disposable hair restraint for helmet.....	13
DIY M8 Connector - 35 mm ²	236
DIY M8 Connector - 50 mm ²	236
Docker gloves.....	32
Double cone sharpener 2000/150 ² -240 ²	416
Double loop galvanized steel pulling sleeve or cable puller.....	488
Double rack slip-joint pliers ATEX II.....	548
Driving heads for hearth rods.....	102
Dry powder fire extinguishers on wheels.....	110
Dual cartridge half mask.....	21
Duck Bill clamp (Spring pre-positioning clamps).....	337

E

Ear muffs.....	17
Ear protection system for helmet 26 dB.....	17
Earth and resistivity tester.....	384
Earth and resistivity tester (4 wires).....	383
Earth clamp for pylon angle section with TFK connection.....	354
Earth clamp, substation version.....	354
Earth connection and measurement plate HN 64S33.....	102
Earth connection and measurement plate on support.....	102
Earth Resistivity set.....	385
Earth stud with plate 40 kA/1s.....	357
Earth Tester (3 wires).....	382
Earth/ground resistance testers.....	383
Earthing and sc device for bare MV overhead lines.....	331
Earthing and short-circuit equipment for overhead lines.....	333, 335
Earthing and short-circuiting clamp for bare LV overhead lines.....	321, 322

Earthing and short-circuiting device for cells.....	341
Earthing and short-circuiting device for industrial LV switchboards.....	326
Earthing and short-circuiting device, with spring line clamps.....	333
Earthing and short-circuiting equipment for bare LV overhead cables.....	321, 322
Earthing and Short-Circuiting System for MV substations.....	340
Earthing arrester for energy canles.....	288
Earthing cable reels for equipotential bonding.....	351
Earthing clamp.....	339
Earthing clamps for compact fixed ball points.....	342
Earthing clamps for PIMT device.....	340
Earthing clamps, substation and line version.....	352
Earthing clamps, substation version.....	353
Earthing from the ground with insulating rope.....	353
Earthing kit.....	385
Earthing system with interlocking between line and earth clamp.....	346
Earthing to post for Overhead Lines.....	334
ECO triangular tent.....	576
Economical insulation and continuity tester.....	375
Electric shock first aid sign.....	430
Electrical hazard warning signs and earth signs.....	432
Electrical meter replacement tool set.....	228 to 230
Electrical plug lockouts.....	460
Electrical safety kit.....	106
Electrical safety kit.....	104
Electrician face shield with headband and brow-guard.....	9
Electrician Helmet with integrated face shield.....	9
Electrician leather bag.....	135
Electrician leather tool bag.....	137
Electrician pocket knives.....	590
Electrician scissors.....	203
Electrician's hammer with Hickory shaft.....	598
Electrician's level.....	604
Electrician's scissors with stripping notches.....	590
Electrode and soil resistivity stake and wire kit.....	385
Electronic HV no-voltage tester, from 50 to 765 kV.....	313
Electronic voltage detectors.....	295
Electronics tool set.....	231
Electrostatic earthing device.....	573
Emergency exit sign, frame + arrow.....	433
Emergency kit for 20 m height.....	76
Empty case for PIMT earthing device.....	344
End cutting pliers ATEX II.....	546
End cutting pliers ATEX II.....	547
Engineer's hammer 22 Hickory shaft.....	598
Engineer's hammer with carbon shaft.....	598
Enlarger 1/4" - 3/8" (6,35 mm - 9,53 mm).....	188
Enlarger 3/8" - 1/2" (9,53 mm - 12,7 mm).....	180
Equipotential bonding.....	349
Equipotential bonding bars.....	100
Equipotential bonding set for construction companies.....	350
Equipotentiality parking bar on post.....	338
Evacuation harness.....	76
Expandable barrier.....	441
Extension piece 1/2" (12,7 mm) square drive ATEX I.....	555
Extra large safety pin for warning mesh.....	435

F

Fall arrester.....	65
Fastening system.....	279
Female 12 sided socket 1/2" (12,7 mm) square drive ATEX 1.....	555
Female 12 sided sockets 1/2" (12,7 mm) square drive ATEX I.....	554
Fibreglass measuring tape.....	602
Filtering cartridges.....	21
Fire blankets.....	111
Fire extinguisher sign.....	433
Fire set.....	111
First aid set.....	112
Five sections compact insulating stick.....	268
Fixation rod.....	438, 439

Flame resistant and arc flash resistant balaclava, ATPV 12,1 cal/cm ²	12
Flame resistant inner gloves	30
Flame resistant, insulated equipment	57
Flat saline battery 4,5 V	125
Flat/Phillips screwdriver for terminal blocks	153
Flat/Pozidriv screwdriver for terminal blocks	154
Flexible aluminium earthing and short-circuiting cables	358
Flexible copper earthing and short-circuiting cables	358
Flexible hose	537
Flexible test grip, IP2X	398
Folding key CPM	582
Folding rescue stretcher set	112
Foot control pedal	535
Foot operated hydraulic pump	532
Forestry safety helmet	10
Four function MV case for peelable and non-peelable semicon	427
Free air breathing apparatus	22
Front ratchet cable cutter Ø 35 mm	508
Full body harness for linemen	62
Full case 50 mm ² to 240 mm ² IMPB	425
Full case 50 mm ² to 240 mm ² with TC	419, 421
Full case 50 mm ² to 240 mm ² without TC	419, 420
Full case 50 mm ² to 630 mm ² with TC630	420, 424
Full case for cables preparation	423
Full case for LV/MV impregnated paper cables	425
Full case for NPT cable 1200 mm ²	423
Fully coated adjustable spanner ATEX II	558
Fully coated offset pipe wrench	550
Fully insulated adjustable spanner	165
Fully insulated diagonal cutting pliers	160
Fully insulated electrician scissors	203
Fully insulated flat nose pliers	158
Fully insulated half-round straight long nose pliers	157
Fully insulated stripping pliers	162
Fully insulated universal pliers	155
Fuse 6x32 mm	398
Fuse extractor	220, 278

G

Galvanized steel connector, opening 18 mm	69
Gas cartridge	585
Gas pliers ATEX II	549
Gas tightening kit - square drive 1/2"	551
Gauge	274
Generating set	128
Green warning flag - Electrical hazard	442
Ground indication sign	432
Grounded wall socket adaptor	401
Group lock box	455
Guided type fall arrester	64, 65
Guy-wiring device for wooden poles	481

H

Hacksaw frame	605
Hacksaw spare blade «ULTRA MAJOR»	605
Half moon quick link 10 mm	70
Half round shovel	587
Half-round long nose telephone pliers ATEX II	546
Halogen rechargeable light	118
Hand lamp - Fluorescent tube 8 W	120
Hand lamp 24V	120
Hand-drilling hammer with Hickory shaft	599
Hand-held time domain reflectometer and cable length meter	387
Handheld Time Domain Reflector	388
Handle for mesh clamps	436
Handle-off ball valve lockout	462
Handling leather gloves	32, 33
Hardwood cylindrical handle	499

Harness for industry with 3 anchorage points	57
Harness for linemen with moving belt 180°	59
Harness for linemen with moving belt 180° and automatic buckles	60
Harness with 1 anchorage point for works on cradle	57
Harness with 3 anchorage points for industry	58
Harness with insulated metal buckles	61
Haul system with 2 double pulleys	73
Head end protection box	247
Hearthings grids	99
Heating gun	585
Heavy-duty ratchet cable cutter Ø 52 mm	509
Helmet and face shield, HRC 2, ATPV 12 cal/cm ²	8
Hex key	563
Hex socket wrench	564
Hexagonal rod	328
Hexagonal shunt clip	241
High flexible earthing tapes out of tinned copper	97
High performance cooling vest	53
High resistance bag for earthing cable	143, 361
High resistance coated canvas bag	142
High resistance tool tray	141
High visibility rain jacket and pants	53
High visibility waistcoat class 2	52
High Voltage DC detector	315
Holdall bag	142
Holdall soft case	138
Hook with small rope for telescopic stick	68
Hook wrench	565
Hot stick tester	273
HV HYDRAULIC SPIKING CABLE SET	310
Hydraulic crimping head	525, 526
Hydraulic cutting head	512, 513
Hydraulic indent crimping head	525, 526
Hydraulic power unit	533, 534
Hydraulic Spiking-Cutting cable set	304
Hooked poles for off-tension work	262

I

Impact diver	584
Impact drill	583
Indent crimping pliers	519
Indent crimping pliers in case with 85 terminals and lugs	520
Indent crimping tool for bare lugs and insulated lugs	519
Industrial safety helmet for linemen	7
Industry / building industry harness	58, 59
Infrared thermometer	391
Insulated female hexagonal socket 1/4" (6,35 mm) square drive	187
Insulated square end socket wrench	175
Insulated 12-sided female socket - 1/2" (12,7 mm) square drive	194
Insulated 12-sided female socket - 3/8" (9,53 mm) square drive	178
Insulated 12-sided female socket set 1/2" square drive, long series	197
Insulated 12-sided female socket, long series, 1/2" (12,7 mm) square drive	195
Insulated 4 Nm torque limiting T-wrench 3/8" square drive	182
Insulated 4-size ring spanner 13 x 14 x 16 x 17 mm	167
Insulated adhesive tapes	83
Insulated adjustable spanner	165
Insulated bent male hex key with handle	171
Insulated bent socket spanner	170
Insulated bent TORX key T50	170
Insulated bolt cutter	113, 212
Insulated box wrench	174
Insulated cable cutter 36 kV	113
Insulated clips	240, 241
Insulated connector pliers	162
Insulated cutting pliers	163
Insulated diagonal beveled cutting pliers	216
Insulated diagonal cutting pliers	159, 160
Insulated diagonal flush cutting pliers	216
Insulated end cable cutter	160

ALPHABETICAL INDEX

Insulated end cutting pliers.....	217
Insulated female hexagonal cross spanner.....	175
Insulated female hexagonal radio key.....	218
Insulated female hexagonal socket - 1/2" (12,7 mm) square drive.....	195, 196
Insulated female hexagonal socket - 3/8" (9,53 mm) square drive.....	177
Insulated female hexagonal socket set 1/2" square drive, long series.....	197
Insulated flat nose pliers.....	158
Insulated flush cutting pliers.....	159
Insulated frame to delimit the working zone.....	437
Insulated full round straight nose pliers.....	157
Insulated fuse extractor pliers.....	162
Insulated hacksaw.....	202
Insulated half-round bent 45° nose pliers.....	156
Insulated half-round bent long nose pliers.....	215
Insulated half-round short nose pliers.....	215
Insulated half-round straight long nose pliers.....	156, 215
Insulated handle with hand guard.....	329
Insulated hexagonal 19 mm end piece.....	175
Insulated hexagonal nut driver.....	172
Insulated junior hacksaw.....	202
Insulated knife.....	201
Insulated long flat nose pliers.....	215
Insulated LV Pliers.....	404
Insulated male hex key 90° bent.....	171
Insulated male hexagonal socket - 1/2" (12,7 mm) square drive.....	196
Insulated male hexagonal socket - 3/8" (9,53 mm) square drive.....	179
Insulated male hexagonal socket 1/4" (6,35 mm) square drive.....	187
Insulated male TORX socket 3/8" square drive.....	179
Insulated miniature Phillips screwdriver n° 00.....	218
Insulated miniature screwdriver for slotted screws.....	218
Insulated non reversible ratchet torque wrench 30-150 Nm.....	200
Insulated offset slotted screwdriver single blade crosswise.....	150
Insulated offset-head diagonal cutting pliers.....	159
Insulated Phillips screwdriver with smart diameter blade.....	151
Insulated pipe wrench for square nuts.....	174
Insulated plastic folding rules.....	603
Insulated Pozidriv screwdriver with smart diameter blade.....	151
Insulated Pozidriv stubby screwdrivers.....	151
Insulated ratchet cable cutter.....	207 to 210
Insulated ratchet ring spanner - 6 sided.....	173
Insulated ratchet spanner 1/2" (12,7 mm) square drive.....	192
Insulated ratchet spanner 1/4" (6,35 mm) square drive.....	187
Insulated return pulley for service ropes, force 60 DaN.....	503
Insulated reversible ratchet spanner 3/8".....	176
Insulated reversible ratchet torque wrench 1/2" square drive - 8-50 Nm.....	200
Insulated reversible ratchet torque wrench 3/8" square drive - 8-50 Nm.....	198
Insulated reversible ratchet torque wrench 3/8" square drive 4-20 Nm.....	198
Insulated rope-operated hoist.....	494, 495
Insulated round nose pliers.....	216
Insulated scraping pliers for varnished wires.....	218, 588
Insulated screwdriver for round headed or conical squ. countersunk screws.....	172
Insulated screwdrivers ROTOLINE.....	148
Insulated shear type cable cutter.....	211, 212
Insulated silicone-coated cloth.....	273
Insulated single head cranked ring spanner (12 sided).....	167
Insulated single head ring spanner, inclined head 15°.....	173
Insulated single open ended spanner.....	166, 217
Insulated slip-joint adjustable pliers.....	161
Insulated slotted screwdriver with smart diameter blade.....	150
Insulated slotted stubby screwdriver.....	150
Insulated socket.....	245
Insulated socket set for confined spaces.....	190
Insulated socket spanner.....	169
Insulated stepladder.....	470
Insulated straight hex key driver with handle.....	170
Insulated stranded nylon polyester rope tie.....	492
Insulated strip saw.....	407
Insulated stripping pliers.....	162
Insulated T wrench 1/2".....	193

Insulated T-handled box spanner	168, 169
Insulated torque limiting screwdriver 4 Nm	154
Insulated torque wrench 3/8" set	199
Insulated triangle spanner 11 mm with handle	164
Insulated T-wrench 3/8"	181, 182
Insulated universal pliers	155
Insulated V-shaped lifting antenna	278
Insulated wrench for ring connetors	220
Insulating bag for connectors	82
Insulating cap for LV insulator	81
Insulating combination ladder with 2 or 3 sections	468
Insulating composite cutting pliers Ø 22 mm	164
Insulating composite flat nose pliers with ceramic blades	158
Insulating composite gloves	27
Insulating composite pliers for network cables	404
Insulating composite universal pliers with ceramic blades	155
Insulating gouge	214
Insulating half-round bent nose pliers with ceramic blades	156
Insulating hydraulic oil	535
Insulating knife with ceramic blade	201
Insulating latex gloves	26
Insulating lever	214
Insulating mat with fringes	78
Insulating mats	40
Insulating notch pliers	159
Insulating operating hook	275
Insulating plastic stool	94
Insulating pliers for electrical panel builder	157
Insulating pliers for lead sheath cables	406
Insulating pointed chisel	214
Insulating reeler	127
Insulating rescue stick	107
Insulating screen 20 kV for substation	85
Insulating separator with groove	213
Insulating sheet	78
Insulating single piece plastic stool for inside use	94
Insulating sleeve for LV conductor wire	79
Insulating spanner	581
Insulating stick 2 or 3 section from 1,54 m to 2,05 m	268
Insulating stick for operating CHC31 low point extensions	356
Insulating sticks	259
Insulating storage box for electricians' gloves	31, 92
Insulating stripping pliers	217
Insulating tape	78
Insulating telescopic stick 2,36 m	267
Insulating transport hook 50 daN	499
Insulating wedge	213
Insulating wedge separator	213
Insulation and continuity testers	375
Insulation chamfering stylus	413
Insulation piercing connectors for GDDTORS device	323
Insulation remover 14 - 40 mm	416
Insulation Resistance Testers	378
Interface for short-circuiting on P&I Interface Panel	327
Intermediate earthing stick for connections at great height	355
IP2X 4 mm safety lead with right-angled plug	396
IP2X 4 mm stackable safety lead	395

J

Jacket remover with retractable blade	592
Jaw or complete grip for «Tirvit» tensioners	484
JOKARI stripping knife	591
Junction box	246

K

K1 type flag	447
Kernmantle rope Ø 12 mm	72
Knife	568

L

Labelled lockout hasp	457
Laboratory set with 31 safety micro tools.....	219
Lanyard securing rope with connector	71
Large carrying bag for insulating mats.....	41
Lead pliers without text bloc	589
Lead sheath spreader (LV-MV)	407
Lead with retractable sleeve	395
Leakage multimeter clamp	386
Leather and textile backpack	140
Leather bag	136
Leather belt, accessory holder	139
Leather overgloves	29
Leather tool bag	138
Leather trolley bag for small interventions	135
LED Flashlight ATEX Zone 0.....	121
LED hand lamp	121
LED Headlamp (3 or 4 LED).....	116
LED headlamp ATEX Zone 0	117
LED photoluminescent flashlight	118
Level	604
Lever-operated come along clamp or Tensioner	486
Lifting fork for wooden poles.....	499
Lifting pulley for steel cables	504
Lightweight rolling individual platform.....	474, 475
Line ice breaker rod	277
Live LV cable identifier	366
Live LV feeder and phase identifier 6 to 12 feeders	364
Live working boots with insulated soles	38
Live Working safety boots 20 000 V	39
Lockout device for handles of 1/4 turn valve	461
Lockout device for ultra-fine holes	457
Lock-out hasp 4 mm	456
Lockout station.....	455
Long distance LED headlamp.....	116
Long extension 1/2" (12,7 mm).....	193
Long extension 1/4"	188
Long extension 3/8"	181
Long length LV notched insulating sleeve	80
Longitudinal cutting head 1 or 3 penetrations	418
Low volatge earthing arrester and phase indicator	286
Low Voltage Live Working Case.....	407
Low Voltage Spliced ladder kit	471
Low Voltage tool set.....	222 to 224
Lug All winch hoist.....	493
LV - MV Pliers for lead sheath cables CC 2.3 LC 3.5	406
LV Cable stripper 54.6 / 148 mm ² or 54.6 / 70 mm ²	406
LV Cable stripper 6 sections for overhead network	405
LV Circuit breaker lockout	458 to 460
LV Dielectric safety boots 1000 V	39
LV Earthing and short-circuiting device for panel boards and cabinets.....	325
LV insulating cap for conductor ends.....	82
LV phase rotation indicator.....	369
LV Pliers for connection cable CC 1.2 LC 1.6	405
LV Pliers with 3-position head for connection cable.....	405
LV Short-circuiting and Earthing Device for panel boards and cabinets.....	324
LV voltage detector TAG780	290
LV-MV Hydraulic cable spiking-cutting set.....	305, 306
Lyon type pulley blocks.....	502
Lead with fuse.....	393

M

M12 insulated righ angle connector	236, 237
M12/Lug Ø14 flexible shunt cable.....	235
M12/M12 Flexible shunt cable - 120mm ²	235
M16 female socket	245
M16 insulated right angle connector	237

M8/M8 Flexible shunt cable.....	234, 235
Maintaining tool for mechanical fitting connectors	410
Maintenance case.....	133
Male hexagonal socket 1/2" (12,7 mm) square drive ATEX I.....	555
Male hexagonal T keys - Short and long version	171
Mandatory safety signs.....	433
Manual hydraulic cable cutter	510, 511
Manual hydraulic crimping tool	522 to 524
Manual hydraulic indent crimping tool	523
Manual ratchet lever hoist	493
Manual reel	248, 588
Manual tensioner.....	593
Manually-operated insulating extension ladder with 2 sections	467
Marking cone of access to the protected area.....	436
Marking of the Minimum Approach Distance.....	434
Mason's cold chisel	600
Mason's pointed chisel	601
Measuring Stick.....	391
Megohmmeter	377
Mesh.....	435
Metal saw frame for 300 mm blades ATEX I.....	568
Metallic reel type H.....	445
Meter tester	372
Micro-clamp mutli-position, multi-contact, 200 A.....	242
Middle Voltage Case	424
Middle Voltage Spliced ladder kit	472
Miniature Circuit Breaker Lockout Device.....	459
Mobile fall arrester.....	64
Mono-lens safety glasses anti UV.....	15
Mono-lens safety overspec	16
Motorized reel.....	249
Multifunction blowtorch	585
Multifunction installation tester	372
Multifunction tool for bonded semiconductor.....	411, 412
Multifunction tools for sheath, peelable semicon and insulation	413, 414
Multi-gas detector	23
Multi-head bung wrench.....	565
Multilingual labels for padlocks.....	463
Multimeter clamp.....	380
Multimeter clamp.....	381, 382
Multiple locking device	454
Multi-position flame retardant balaclava	11
Multi-purpose telescopic insulating stick PENTA-POLE.....	264
MV hook ammeter	374
MV Hydraulic Spiking-Cutting cables set.....	307, 308
MV Voltage detector VECTOR.....	296

N

Needle mounted on drum reel.....	490
NH fuse handle with protective sleeve.....	328
Ni-MH battery - 2.6 Ah.....	310
Nitrile mat	312
Non deflagrating headlamp.....	117
Non-conductive tape measure	603
Non-metallic safety shoes S3.....	36
Non-reversible ratchet torque wrench 1/2" square drive ATEX II.....	552
Non-tripping loop and RCD tester.....	389
Notching pliers	80
Nylon composite lock-out hasp	456
Needle mounted on drum reel.....	490

O

Offset pipe wrench ATEX II	550
Offset ring spanner	563
Offset ring spanner ATEX I.....	562
Oil refill.....	312
Open ended spanner.....	561
Open ended spanner ATEX I.....	559

Open socket wrench	597
Operating Hooks	275
Orange warning mesh for work.....	434
Orientable magnetic spotlight 12 or 24 V	122
Outer sheath pliers 10-28 mm CC 1.0 without TRL	417, 418
Oval quick link 8 mm	70
Overhead cable height and clearance meter	390
Oversheath remover for cables with IMPB.....	408
Oversized plug control cover	460

P

Padlock rack.....	454
Padlock stations	455
Paint scraper	568
Pair of cable drum unwinders on base	504
Parrot beak cable cutter Ø 30 mm	212
Partial Discharge Scanner.....	392
PE Sheath cutter for coated steel pipes.....	427
PE Sheath spreader	409
Peak scraper	571
Peelable semiconductor lifter.....	415
Permanent simple and double position earth connectors.....	356
Permanent voltage indicator light.....	301
Personal Protective Equipment bag	129 to 131
Petroleum PVC gloves	33
Phase tester for LV network	292
Phillips screwdriver.....	567
Phillips Screwdriver ATEX II.....	567
Pickaxe.....	572, 586
Pinching bar	569
Pipe wrench.....	564
Plastic base for rod	439
Plastic cable ties.....	589
Plastic chain	443
Plastic clip for insulating sheets and bands.....	79
Plastic measuring vernier caliper	602
Plastic screw box.....	134
Plastic tag 80 mm «Do not operate - Disconnection»	463
Plastic toolbox	133
Plastic-coated pliers for insulated connectors	595
Plate removing hammer.....	500
Pliers for impregnated paper CC 4,65 mm	417
Pliers for plastic collars.....	595
Plumber leather bag with carrying handle.....	136
Pneumatic insulating stick.....	270
Point square bradawl.....	601
Pole extractor	498
Polyamide canvas tool bag.....	137
Polyamide or white nylon braided rope (8 reels).....	497
Polyester fibreglass insulators (female/female)	99
Polypropylene rope (4 strands).....	497
Polypropylene tool box	132 to 134
Portable anchoring device for insulated ladders	470, 471
Portable halogen spotlight 300W.....	122
Portable multimeter	379
Positioning foot-rest for concrete poles	480
Positioning girder.....	480
Post on base for plastic chains.....	443
Powder flask.....	31
Power adaptor 4 plugs + plug-in circuit breaker 30mA	127
Power socket tester, earth connection impedance meter.....	370
Power supply block.....	128
Pre-filters P2	21
Prick wire shunt clip	242
Professional blade cutter	591
Professional hand lamp.....	120
Profiling shears ATEX II	547
Protection bag for electrical cabinets S22.....	84
Protective cover	79

PU coated handling gloves	34
Public lighting short-circuiting set for NEVERS device	320
Pulley with revolving flange opening for steel cables.....	502
Pulling needle in case + repair kit.....	489
Pulling needle Ø 4 mm.....	489
Pulling sleeve or cable puller	487, 488
Pulling/lifting winch set 150 m for linemen	505
Pulling and lifting tool with limited cable travel.....	491
PVC covered flat copper braids	95
PVC covered round copper braids	95
PVC Phase marking tapes	83
PVC Sheath spreader	409
PVC soft case.....	139
PVC strip for junctions.....	84
PVC-coated flag.....	360

Q

Quick standard couplers	536
-------------------------------	-----

R

Rain suit (jacket and pants).....	53
Ratchet bit brace	584
Ratchet cable cutter.....	508, 509
Ratchet controlled cable drum lifter	498
Ratchet torque wrench kit.....	551, 552
Rechargeable portable 4 LED lantern	119
Rectangular alkaline battery 9 V 6LR61.....	125
Red warning flag - Electrical hazard.....	442
Reducer 1/2" - 1/4" (12,7 mm - 6,35 mm)	194
Reducer 1/2" - 3/8" (12,7 mm - 9,53 mm)	194
Reducer 3/8" - 1/4" (9,53 mm - 6,35 mm)	180
Reel equipped with an earth clamp	339
Reel for continuity test, 100 m	400
Reeler-unreeler with safety thermal circuit breaker	126
Reflecting safety armband	52
Reflective safety tape.....	444
Reinforced insulating composite cutting pliers	164
Reinforced PVC-coated canvas tool bag.....	137
Remote Area Lighting System	123, 124
Remote Area Lighting System ATEX Zone 2	124
Remote control	535
Remote controlled hydraulic spiking and cutting tool.....	309
Remote electrical field detector.....	314
Removable handle for fuses.....	328
Removable panel in retro reflective fabric	446
Rescue set.....	73, 103
Rescue strap	73
Residual current device tester.....	389
Retractable steel cable fall arrester.....	66
Retractable webbing fall arrester	66
Retro reflective steel triangular signs, type AK Class I.....	447
Retro reflective picket K5B.....	447
Return pulley for service ropes.....	501
Reusable earplugs 33 dB with cord.....	18
Reversible ratchet wrench 1/2" (12,7 mm) square drive ATEX II	554
Ring-set of 8 hexagonal metric key.....	597
Rod.....	438
Rod to conductor clamps	102
Rolling earth device for cables unreeling.....	354
Roll-up soft case.....	139
Rope for warning mesh.....	435
Rope-operated insulating extension ladders with 2 or 3 sections	466
Rope-operated mixed extension ladder with 2 or 3 sections.....	469
Rotating gate valve lockout devices	461
Round alkaline battery	125
Round paintbrush	595
Round shovel.....	586
Round wire stripper	592

Roundsling	496
------------------	-----

S

Safeguard	441
Safety 8-shaped descent device	73
Safety adhesive tape	444
Safety ankle boots SC3Cl	36
Safety anti-fogging mask	16
Safety boots S3 HRO for linemen	35
Safety cable cutting device	302
Safety cap	11
Safety fluorescent waistcoat antistatic and flame retardant	52
Safety glasses for live line working	14
Safety helmet for linemen	6 to 8
Safety measuring lead	251
Safety set for substations with bare conductors	89
Safety shoes S1P	37
Safety shoes S3Cl , fully non-metallic	35
Safety shoes with insulating soles up to 20 kV	37
Safety wire-grip with insulated croc clips to IP2X	398
Saw blade	568
Scissor type snatch pulley	501
Scraper for semiconductor residues	415
Scraper with angled blade	571
Scraper without handle	569
Scratch brush	595
Screw and socket extension box	246
Screw clamp for bare MV overhead lines	337
Self adjusting cut and strip tool	591
Self maintenance kit	422
Self maintenance kit for HTA 240 NG tool case	422
Self maintenance kit for HTA 630 NG case	423
Self-extensible copper-coated steel rods	98
Self-extensible stainless steel rods	98
Semi-aural banded earplugs 33 dB	18
Semi-static rope 10,5 mm	72
Semi-static rope 18 mm	496
Set for industry	55
Set for suspension works	56
Set for works on cradle	54
Set for works on scaffolding	55
Set for works on telecommunication network	56
Set of 10 tools in transport case	226
Set of 2 bollards of access to the protected area	436
Set of 2 phase separators	213
Set of 2 safety leads	396
Set of 2 triangular earthing flags	360
Set of 25 metal drills - Ø 1 to 13 mm	583
Set of 6 insulated screwdrivers	153
Set of 6 insulated screwdrivers Rotoline Classic	152
Set of 6 insulated screwdrivers Rotoline Classic with soft case	152
Set of 6 insulated screwdrivers Rotoline Turn	152
Set of 6 insulated screwdrivers Rotoline Turn with soft case	153
Set of 8 insulated bent male hex keys on ring clip	217
Set of 8 single open ended spanners for calibration	166
Set of 8 tools in transport case	225
Set of 8 tools in transport case with insulating gloves and overgloves	226
Set of cables for short-circuiting and earthing devices	341
Set of testing accessories	399
Sharpenable chisel for brick	600
Sharpening steel	202, 590
Sheath abrading block for ROTO-TMG tool	411
Sheath and insulation multifunction tools	411
Sheath pliers with 3-position head	410
Sheathing guide	80
Short extension 1/2"	192, 193
Short extension 1/4"	188
Short extension 3/8"	180
Short-circuiting and earthing device for bare LV overhead lines	322

Short-circuiting and earthing device for substations s	344
Short-circuiting device	327
Short-circuiting equipment	323
Short-circuiting equipment for LV overhead lines	319
Shovel with handle	572
Shunt clip for flat bus bar	241
Shunt clip for stripped cable	242
Siliconized leather overgloves	28
Single head hex key ATEX II	562
Single head ring spanner ATEX II	560
Single head socket wrench ATEX II	563
Single offset ring spanner ATEX II	562
Single open ended spanner	560
Single open ended spanner ATEX II	558
Single piece cable drum unwinder	504
Single use, dust proof soft cup mask	19, 20
Sledge hammer	572, 599
Slip joint pliers ATEX II	548
Slip joint pliers with locking button ATEX II	549
Slotted screwdriver	566
Slotted screwdriver ATEX II	566
Slugging and fork wrench	570
Slugging box wrench	570
Small gas operations kit	553
Small intervention leather or canvas worker bag	136
Small plastic clip for insulating sheets and bands	79
SMAPE device	346
Soft leather gloves	34
Soft leather tool bag for working at height	138
Soldering iron	586
Special «Rivaux» type grip	499
Special lead for LV measurement	396
Special self-contained breathing apparatus	23
Spiral unwrapper 0,6 - 1 mm	588
Split leather tool bag with shoulder strap	136
Splitter for outer sheath 50-630 mm²	408
Square mallet	572
Square shovel	587
Square-end or round-end shunt clip	242
Stainless steel strip	594
Stainless steel connector in 6 mm rod	69
Stand for MV fuses	92
Standard copper-coated steel rods	98
Static rope 10,5 mm	72
Steel gimlet, rolled rings	584
Steel lockout hasps	456
Steel sling with thimble eye at each end	492
Steel strip shears	593
Stick access hole	93
Stick lifter	272
Stick lifter rod	272
Stick with Hook	263
Stickers for lockout or disconnection padlocks	463
Stillson pipe wrench ATEX II	549
Storage bag for working at height	141
Straight blade machete	604
Straight fixed ball point	343
Straight needle nosed pliers	588
Straight shackle	500
Strap Kit for LV and MV spliced ladders	472
Strengthened artilley padlock	453
Stringing pulley for bare cables, with hook	502
Stringing pulley for insulated LV aerial bundled connectors	503
Stripping tool «Kabifix»	592
Substation sign - Responding to an electrical accident	431
Substitution power terminal block	83
Support rods for current meter panels	605
Survival blanket	112
Suspension harness with dorsal reinforcement	61

Suspension safety harness	60
Switch box.....	247
Synthetic flat webbing sling	496

T

Test lead with fuse.....	394
Tactical binder	139
Tear webbing energy absorber.....	62, 63
Tear-off equipotential bonding.....	350
Telephone cable stringing pulley	501
Telescopic halogen spotlight 500 W	122
Telescopic insulating measuring stick.....	266
Telescopic probe for continuity test and no voltage detection	400
Telescopic sticks.....	256
Temporary sc and earthing device for LV flag-type lines.....	320
Temporary transportable anchoring device.....	68
Tennis type mesh with marking	435
Tensioner with strap-operated catch.....	503
Tensioning come along cable clamp.....	486
Tensioning tool	593
Tester Clamp for flat contacts	399
Tester for electricity meters	373
Tester for insulating gloves	30
TFK / TSF connections	359
Three elements recsue stick 50 kV	107
Three function MV case for non-peelable semiconductor	426
Three function MV case for peelable semiconductor	426
Three LED clip lamp.....	119
Tightening hand with insulating body.....	263
Time domain reflectometer	387
Tinned flat copper braid	96
Tinned round copper braids	96
Tirvit tensioner.....	484
Tool bag in black split leather.....	135
Toolbox with removable tray	132
Topometer	601
Torque limiter socket 3/8" (9,53 mm).....	181
Traction dynamometer	491
Traffic cones K5a-type	446
Transport cover for insulating mats	41
Trench digging shovel	587
Triangular earthing flag.....	361
Triangular insulating spanner 11 mm	164
Triangular quick link	70
Triple earthing clamp	339
Tripod	446
TRMS AC digital multimeter	379
Turning flag holder.....	361
Twist lock connector	70
Two wire Loop Impedance Testers	384
T-wrench 1/2" (12,7 mm) square drive ATEX II.....	556

U

Ultrasonic corona/arcing detector	392
Universal fuse handle.....	278
Universal miniature circuit-breaker lock-out (LV)	458
Universal pliers ATEX II.....	546
Universal springless grooved cam for copper cable.....	484
Universal stick	262
Universal stick support.....	272
Universal switch cabinet key.....	582
Unreeler with telescopic nozzle.....	588
Unwinding swivel.....	491
Unwinding trolley.....	436
Utility line location system	388

V

Visumeter for 3 phase earthing arrester.....	287
Voltage Absence Detector with air gap arrester	89, 90

Voltage detector 1 to 4 kV	299
Voltage detector 5-36 kV with compact stick	91
Voltage detector for substations and overhead lines.....	299
Voltage Detector for use on capacitive terminals	301
Voltage detector set.....	298
Voltage detector with integrated self-test 127 V to 90 kV	106
Voltage Limiting Device.....	357

W

Wall Bracket for Storage	359
Wall brackets for sticks.....	93
Warning sign «Work on disconnected line - High Voltage»	430
Warning sign «Work on disconnected line - Low Voltage»	430
Welding gloves	33
Welding tent	577
Welding umbrella.....	577
Wire puller	489
Wire rope gripper.....	486
Wireless phase comparator.....	367, 368
Wire-pricking terminal TECHNOMIC	240
Wooden swingback stepladder	476
Work light for intervention.....	91, 124
Work platform for electricity poles.....	479
Work positioning belt.....	76, 77
Work positioning lanyard.....	71
Wrap-around mono-lens safety glasses	14
Wrap-around safety glasses	15
Wrecking bar	569

Y

Yellow triangular flag with no marking and no shaft	361
---	-----

12000 series	393	ARCCOI53	51	C187	596	CHC31	355
13000 series	394	ARCSAL40	50	C199	597	CHI31	356
2217/600V	395	ARCSAL53	51	C2	69	CIR001	423
2312-IEC-120N+R	396	ARCVES40	50	C20 - C21PT	453	CIT	139
2352-IEC	396	ARCVES53	51	C205	596	CKM-HTA	422
2617-IEC	395	ARS1	66	C206	582	CKM-HTA-240-NG	422
5049	211	ARS3	66	C209	580	CKM-HTA-630-NG	423
5063/3283N/N	399	ART160	132	C210	580	CM	275
5066-IEC	397	ART162	133	C213	580	CM535	344
5544E	213	ART163 - ART165	132	C214	581	CMTBT	324
6005-IEC	397	ART17048H	133	C216	597	CMV/240-1-NG	420
6007-IEC	398	ASCCHEST	74	C222	463	CMV/240-2-NG	421
6009-IEC	398	ASCPD - ASCPG	74	C255	583	CMV/630-1-NG	424
701	328	ASCS	75	C259NM	133	CMV-1	424
7805	361	ATG5/DN50-150	427	C26	463	CMV-3F-NP	426
802 - 842	501	AUTOCLAM	334	C272	143	CMV-3F-P	426
823711C	396	AVO310	379	C274	143	CMV-3F-PGNP	426
82814	535	AY	128	C279	13	CMV-4F-PNP	427
A		B		C3 - C4	69	CNPT/1200	423
A01-2	489	B REEL 2310	400	C319	72, 496	CNPT/240-1-MV-NG	419
A02	202, 590	B100S	134	C320	497	CNPT/240-2-MV-NG	419
A046	64	B102P - V64V	132	C325	497	CNPT/630-1-MV-NG	420
A046100	68	B104GM	134	C335B	603	CORATRIF	343
A06060TD	490	B107	13	C347	112	CORSTA105	72
A07	489	B108	13	C348	111	CPA-6D	139
A08060TD - A08100TD	490	B11	120	C362B	591	CPI-BT/HTA3	425
A10100TD - A10150TD	490	B134ENS	112	C365-C370-C375-C371	590	CPITORS	323
A10200TD	490	B142	595	C366 - C366 A	591	CPM D H M T	582
A13	593	B16	120	C368	592	CPM-TC223-NG	421
A13AV	593	B195	600	C390	498	C-PROBE LV	373
AB126	18	B55	600	C4000	17	CPV-TST-BT	407
AB127	18	B7604	454	C43	11	CPV-ZA4	425
AB129	18	B88-B89	112	C4500	17	CREPPK	84
AB18LI	518	B96M	134	C46F	508	CROSMIHT	374
AB18LI	532	BACKUP	65	C4D	76	CRY02	278
ABD1	62	BALFT120	120	C5	69	CRYOVEST	53
ABD1Y	63	BATTERIE12V003	310	C62C1	71	CTA/70-180	427
ABS1Y	63	BC.B18V	584	C62F	70	CWB/18-60	415
ABS2-Y	63	BC40	515	C62FL	70	D	
AC18220	518	BC55	516	C65	77	D1	72
AC18220	532	BC85	517	C67N2	77	D105	126
ADAFMSECT	401	BET	100	C67N3	77	D1510 - D4520	602
AFCOM10	44	BGH700	533	C6RL1	152	D171AB	21
AFHV-15	47	BLC25	514	C6RL2	152	D172FFP2	21
AFFPRO-12	46	BLP36	527	C6STISC18	153	D2001	477
AFFPRO-41	49	BLP55	528	C76	508	D25	504
AFSIB-12	45	BM15 - MJ15	377	C77	509	D260	504
AFSIB-25	48	BP13026 - BP13038	530	C79	508	D29	588
AGPB3 - AGPB4	406	BP80	529	C79GM	509	D31 40M	126
AGPB3-1000V	406	BPH130	531	C80B - C80H	37	D60	603
AGPB4-1000V	406	BRMRD1E	416	C85	487	D60	603
ALADIN	293	BSUB16	83	C86	488	D85	491
ALROC-FENTE	408	BT318	321	C90	488	DAD1	537
AMD1	64	BT318_N	321	C90B - C90H	36	DBC332	337
AMD110 - AMD120 - AMD130	64	BT324	322	C91	487	DBT	405
AMT1	65	BTC1000 - BTC1000IP2X	372	C960 - C970	35	DC36	294
AMT110 - AMT120 - AMT130	65	BTC230	373	C974- C975	35	DC3600BPM - DC3600	294
ANS2	67	BTP	357	C980	36	DCEDB382	314
ANS4	68	BVSI	275	C99-ISOL	37	DCG54-148 - DCG54-70	406
ANT780	291	C		C99SR	509	DCM310 - DCM320	380
AOP400N2	583	C1	69	CA871	391	DESA2 APP	471
AOP790N3	583	C119	593	CAP / CAS connections	359	DESA2 STD	470
ARC	66	C159	600	CAX-CBX	356	DET14C - DET24C	386
ARCCAG10	12	C170E	590	CCIVES	113	DET3 - DET4	383
ARCCAG24	12	C182	552	CF39	10	DFH	535
ARCCOI40	50			CHARGEUR-12/12-1	311	DFL1	537
				CHARGEUR-220/12	311		

DFLR	537
DLT8	357
DM171	21
DMCCTBTARFR	320
DMCCTBTI	326
DMCCTBTIX	326
DMTABT324FI	335
DMTBT3245	322
DMTBTT	325
DMTBTR	324
DMTPC	344
DMTTP69	322
DPC/10-45	408
DR706	369
DRR1	536
DRR2	537
DRV1	536
DSP	415

E

E06 2KGS	92, 108
E06 6KGS	93, 108
E07 2KGS	109
E07 5KGS	109
E09 9KG	110
E17NM	476
E20	9
E22E	10
E25	496
E26	496
E27	492
E30 - E35	492
E41	491
E46	476
E52	588
E62	16
E62	589
E64	588
EASYLOC	388
EASYUP	73
ECBT	323
ECC100VATV2	302
EDF M	437
EFMT	278
EH705	533
EH706	534
ELISOL	434
ENSTPBT	286
EPPIPE	435
ERS3437	276
ERS03908	277
ERTTECH	355
EV/NPT	409
EV150 - EV2000 - EV630	409
EVP	407
EY322	333
EY322NG	333

F

F05	438
F06	439
F06 C	594
F06-4 / F06-7	594
F10	439
F30	586
F60	499
FC20-FC25	343

FC2300C	285
FC2300CP	284
FC2310	282
FC3000	365
FC3000X	365
FC5300	366
FD20-FD25	343
FT211	126
FT300	122
FTFAK1	447
FTGAFOU	441
FTPICLO	439
FTRUB	84
FU6X32HPC	398

G

G01	32
G02	33
G05	486
G08 - G10 - G12	486
G109	33
G115N	34
G116N	34
G20	478
G21	478
G22	477
G23	477
G24	478
G26	479
G80	80
G86	30
GA25	34
GASDETECT	23
GC	27
GCA-41	28
GDC	335
GDDTORS	323
GFE-TMG	410
GLB	26
GRI	415
GS10	546
GS100N1 - GS100N2	552
GS100SE	551
GS100X	551
GS1050	568
GS1060	569
GS1070	564
GS1075	565
GS1080	550
GS1100	564
GS1110	560
GS1120	561
GS115	550
GS1150	561
GS1160	563
GS1170	564
GS1180	563
GS1190	570
GS120	559
GS1200	570
GS1250	566
GS1260	567
GS130	559
GS146	562
GS150	549
GS150C	550
GS150CSP	550

GS152	571
GS153	568
GS155	569
GS157 4	572
GS158	572
GS16	558
GS160	568
GS164	571
GS166	569
GS172	568
GS195	547
GS20	563
GS205	567
GS21	562
GS210	566
GS23	562
GS26	548
GS27	548
GS27V	549
GS3100240	572
GS38	560
GS3900470	572
GS4	546
GS400	574
GS450	575
GS5	547
GS6	546
GS62	547
GS63	549
GS65SP	554
GS66	554
GS66L	555
GS67	555
GS69C	556
GS69S	557
GS69T	557
GS7	558
GS71	555
GS72	556
GS7E	558
GS8	548
GS80	571
GS86B	569
GS88	570
GS95	565
GS9100	30
GSPI	553

H

H1	59
H108	73
H108M	73
H125D	41
H1A - H1AS	60
H2	58
H2A	59
H3N	60
H4	57
H5	58
H6	57
H7	61
H7 ISOL	61
H7N	62
H1ALT	345
HTISAFE	41
HTLC4	154
HTSMALT	143

HTSMALT	361
HVDC	315
HVGIL	52
HVGIL2	52
HYDROPI-INT	310

I

IBPH N1 - IBPH N2	153
IBPZ N1 - IPBZ N2	154
IC18	151
IFFM	99
INDYEVO	75
IP18	151
IP18B	151
IS18	150
IS18B	150
IS22	202
IS23TPC - IS23TPL	171
IS36	172
IS39	175
IS47	454
IS64	170
IS77-IS78	201
IS79	201
IS80C	201

J

J100	605
JBG100BV	277
JC660	274
JJB30210	274

K

K100H6	55
K200H6	55
K310H1A	54
K37218188	472
K37238373	472
K400H4	54
K500H1A	56
K630H3	56
K7/GRATT	411
KH2A-AR	57
KIT TERRE PRO	385
KIT VECTOR	298
KIT/TEST-EARTH	385
KITEP	320
KITPCH1000TOP	505
KITPCW5000/150	505
KITSO-01	225
KITSO-02	225
KITSO-03	226
KITSO-04	226
KITSO-05	228
KITSO-06	229
KITSO-07	230
KIT-VERIF	311
KLEQTP	350
KSAFE01-20	76

L

L10	605
L21	585
L5500	16
LD1	71
LEQ	349
LEQ35DB	350

Line version	354
LP9054	272
LRCD200 series	389
LS1-200	72
LT1	71
LTW315-LTW325-LTW335	384
LV LADDER KIT	471
LVS1	68
LWA146	480
LWA455PB	338

M

M01NM	604
M110	500
M115	598
M125	598
M125NER	598
M130	599
M133	22
M135	599
M196M	605
M25	499
MAGICROU	279
MALTAC1050	353
MARTAP	500
MC11CE	158
MC13CE	156
MC25	510
MC40	510
MC45I	164
MC45IR	164
MC4CE	155
MC55	511
MC70	159
MC85	511
MCPTI	157
MF1+/25	411
MF1+/60	412
MF2/40 - MF2/60	411
MF3/40 - MF3/60	413
MF3/40-C - MF3/60-C	414
MF3/40-SR - MF3/60-SR	414
MFT1825	372
MIT200	374
MIT400 series	375
MIT515 - MIT525 - MIT1025	378
ML108-ML112	588
ML16	217
ML18	218
ML23	217
ML281	215
ML282	215
ML283	215
ML283BIS	215
ML285	216
ML288	216
ML289	216
ML291	216
ML292	217
ML301	217
ML36	218
ML56	218
ML56	588
MLC18	218
MM2640	117
MOS30875	534

MOS82801	535
MP130	524
MP36	522
MP55	522
MP80	523
MPH130	523
MR50	354
MRAC-D10	70
MRAC-008	70
MRAC-T10	70
MRP252	19
MRP253	20
MRP352	19
MRP353	20
MS1	170
MS10	156
MS100N0	198
MS100N0P	198
MS100N1 1/2"	200
MS100N1 3/8"	198
MS100N2 1/2"	200
MS100V01	199
MS100V02	199
MS10E	157
MS11	158
MS11E	158
MS13	156
MS13E 170	156
MS15	157
MS16	166
MS19	168
MS19S	168
MS2	203
MS20	169
MS20 6P	169
MS21	167
MS22J	202
MS23	171
MS24	159
MS25NM	212
MS26	161
MS27	161
MS29D	212
MS29SP	113
MS2E	203
MS30	163
MS30S	163
MS31	160
MS32	161
MS34	169
MS35	166
MS36T	164
MS37LL	150
MS37LT	150
MS38	173
MS4	155
MS41	173
MS43	162
MS43E	162
MS45	163
MS46	210
MS46C	210
MS46S	210
MS49	212
MS4E	155

MS5	160
MS51	170
MS51T	170
MS52	171
MS53	162
MS54	188
MS54L	188
MS55	187
MS56	187
MS57	187
MS58	188
MS59	189
MS59A	190
MS59M	191
MS59S	189
MS59T	191
MS59V01	190
MS5S	159
MS6	160
MS60	159
MS60E	160
MS61	211
MS65	192
MS65P	192
MS66 12 sided	194
MS66 6 sided	195
MS66L 12 sided	195
MS66L 6 sided	196
MS67	196
MS69L	197
MS69LP	197
MS7	165
MS70	194
MS71	192
MS71L	193
MS71LP	193
MS71P	192
MS72J	181
MS72JLC4	182
MS72JP	182
MS72S	193
MS72SP	193
MS755	208
MS755R	209
MS76GM	207
MS76GMR	208
MS76S	206
MS76SR	206
MS77	177
MS77L	177
MS78	211
MS780	209
MS79 - MS79A	206
MS790	207
MS79ALG	207
MS79GM	209
MS7S	165
MS7SC	165
MS8	161
MS80	162
MS84	180
MS84L	181
MS84LC	181
MS84LP	181
MS84P	180

MS85	176
MS85P	176
MS85PC	176
MS86	178
MS86L	178
MS87	179
MS87P	179
MS87T	179
MS89	182
MS89V01	183
MS89V02	183
MS89V04	184
MS89V05	184
MS89V06	185
MS89V07	185
MS89V08	186
MS90	194
MS91	180
MS95	188
MS96	180
MS99SR	208
MSPCIUEM	329
MTC35URU	337
MTX202	379
MV LADDER KIT	472
MX24B	379

N

N05A 400	604
N11600	604
N16B400	604
N3B8	339
NB2025	342
NB8	339
NBD25	342
NCT	603
NE23	272
NEVERS	331
NEVERS BT	319

O

O02	601
O03	592
O04	592
OGEDR	408

P

P101	499
P109	589
P109A	589
P110	595
P115	409
P115	594
P117	519
P12	493
P125	519
P125CO	520
P126	520
P127	521
P128	521
P135P	595
P14	577
P140	586
P145	600
P146	98
P147	98

P148.....	98
P149.....	102
P149B.....	102
P149S.....	101
P15.....	493
P154.....	585
P17.....	494
P170 8x125.....	601
P190.....	601
P220.....	502
P222.....	502
P223.....	501
P228 - P228ST - P225.....	503
P230.....	504
P25.....	587
P30.....	586
P40.....	587
P41.....	587
P43.....	602
P85.....	80
P97.....	591
PA3BTERDF.....	319
PA3GTI.....	331
PA4GTI.....	331
PBM.....	101
PBU.....	279
PCT.....	262
PDD.....	271
PDL.....	502
PDRE.....	501
PDS.....	392
PDT-17.....	142
PE9Y.....	595
PENTA-POLE.....	265
PENTA-POLE Compact.....	268
PENTA-POLE measure.....	266
PENTA-POLE R.....	267
PERCHTELE.....	400
PG0/CIR0911.....	417
PG3EC/2020.....	404
PH700.....	532
PICOU250.....	305
PICOU2-E.....	304
PICOU400.....	309
PICOUPEXP240ECE.....	306
PICOUPEXP300ECE.....	307
PICOUPEXP350ECE.....	308
PIMT.....	340
PIMT49S.....	341
PINTEL4/CIR10.....	417
PINTEL4BT/1216.....	405
PINTEL4BT/1216-1000V.....	404
PINTEL4BT/1216-R.....	405
PINTEL4BT/1216R-1000V.....	404
PINTEL4PI/465.....	417
PMT63.....	391
PMT632.....	274
PPOL.....	265
PPU.....	272
PRE.....	260
PRG3/2233 - PRG4/20-2530.....	410
PRG3/CIR20.....	418
PT1250SB.....	270
PTT130.....	329
PTUM.....	269
PVI.....	301
PXV.....	258

Q

Q990205.....	519
--------------	-----

R

R18N.....	585
RBM.....	101
RCDT300 series.....	389
RECHARGE-HUILE.....	312
REEL IEC3 2715 100.....	400
ROADSHELL.....	250
RODEOSTOP.....	67
ROTO LINE.....	148
ROTO-TMG.....	410
RTTE.....	259

S

S04B1.....	434
S10.....	137
S100N.....	441
S1044.....	127
S109.....	52
S11.....	136
S115.....	443
S115SP.....	443
S115SPP.....	443
S120.....	360
S120D - S120E.....	442
S120F.....	442
S120J2.....	360
S120L.....	361
S120LV.....	361
S126AR.....	437
S14.....	122
S152.....	446
S153.....	446
S15MM.....	136
S15PM.....	136
S168.....	438
S170 - S170S.....	445
S174 50MM.....	444
S174JN.....	444
S175JRNG.....	444
S182.....	83
S20.....	138
S200.....	447
S208.....	444
S20T.....	137
S21.....	137
S240ENT - S242ENT.....	446
S26.....	73
S270.....	447
S300LED.....	121
S31.....	138
S318RV.....	221
S32.....	137
S33PM - S33GM.....	138
S350 6 - S675.....	433
S350 GBC11.....	463
S375.....	122
S400.....	125
S402.....	125
S403.....	125
S413.....	125
S429.....	125
S4310.....	91
S4310.....	124

S503.....	440
S504.....	440
S505.....	134
S509NM.....	131
S510.....	131
S515N.....	118
S552NM.....	127
S600N.....	118
S67.....	445
S713.....	433
S724.....	431
S749AL.....	432
S750AL.....	431
S753ALNM.....	430
S754ALNM.....	430
S80A.....	430
S80ALPAS.....	431
S81 - S72 - S73 - S74.....	432
S85.....	442
S87.....	433
S900SAFE - S570SAFE.....	116
S920.....	119
S95.....	441
S950.....	116
SAD-25.....	140
SADPI-CT.....	140
SBA.....	407
SBI.....	407
SC2.....	454
SCH.....	413
SEFRBM.....	100
SFE ARIBASIC.....	22
SFE ARIBOT6.....	23
SFE ARIBOT6C.....	23
SFE ARIPRO.....	23
SFE148.....	455
SFE1965ZO.....	121
SFE2690ZO.....	117
SFE420 - SFE421.....	456
SFE427.....	457
SFE428.....	456
SFE468L.....	462
SFE48.....	461
SFE487 - SFE488.....	460
SFE491B - SFE493B.....	459
SFE5623.....	327
SFE9410.....	119
SFE9430.....	123
SFE9435.....	124
SFE9440.....	123
SFEKDCMGB.....	460
SFEPT.....	505
SFERM3.....	351
SFES1900.....	455
SFES2390 - SFES2391.....	458
SFES2392.....	458
SFES2393.....	458
SFES2394.....	459
SFES3068MLP.....	461
SFES3080.....	462
SFES430.....	456
SFES453.....	460
SFES503RED.....	455
SFES806.....	457
SG.....	29
SGM-OS.....	29
SMAPE.....	348

SP18.....	111
SR.....	412
SRC.....	412
SRC-D.....	413
ST-100.....	130
ST-80.....	129
STA2147DP.....	356
STDA2147DP.....	356
STH-14 - STH-25.....	141
STH-VRP.....	138
STISAFE.....	41
STPI-CT.....	135
STT-100.....	130
STT-80.....	129
SUP600 - SUP600E.....	390

T

T04.....	445
T104.....	139
T105.....	602
T106M.....	602
T108.....	227
T108B1.....	227
T108V.....	139
T26.....	503
T270.....	577
T28.....	576
T31.....	576
T34.....	576
T39.....	489
T410.....	491
T43 - T44 - T45.....	484
T46.....	484
T47.....	486
T48.....	485
T48C.....	485
T48E.....	485
T49.....	484
T6RL1.....	152
T6RL2.....	153
T702.....	339
T88F.....	494
T89.....	495
TAG200BC.....	301
TAG200S.....	300
TAG220.....	299
TAG220L.....	299
TAG330.....	313
TAG5000.....	367
TAG5000S.....	368
TAG780.....	291
TAPISNIT.....	312
TB02.....	141
TB05 - TB10.....	79
TB11B.....	102
TB11C2.....	102
TB11D.....	92
TB19.....	39
TB19BT.....	39
TB20-TB25.....	275
TB210.....	128
TB26.....	220
TBOB.....	39
TC107GB24KV.....	103
TC107GB36KV.....	103
TC108.....	31
TC108.....	92

TC12	480	TG105 to TG122	99	TS280.....	224	TW6507.....	247
TC120	213	TG40 to TG48	28	TS28H	142	TW6508.....	247
TC135	80	TG55 to TG68	32	TS28V.....	135	TW8326.....	248
TC146M.....	385	TG73 to TG76	32	TS30.....	81	TW8327 - TW8328	248
TC15 - TC20	81	TK3S	89	TS338RV	222	TW8420.....	249
TC151P	328	TL05.....	214	TS33N	135	TW8425-14	249
TC151PM.....	328	TL06.....	93	TS38.....	573	TW8445.....	249
TC155	492	TL11.....	351	TS38A - TS38B	573	TW9120.....	251
TC158	399	TL19.....	14	TS48.....	93	TW9182.....	250
TC160H.....	499	TL20 - TL21.....	15	TS51B	16	TWBP4067-015	243
TC240 - TC630	416	TM05N	263	TS707 - TS711	41	TWIST90°-50/300	214
TC25 - TC30 - TC35.....	82	TM06.....	375	TS75.....	142		
TC4	172	TM09.....	385	TSAFE.....	76		
TC40	82	TM17.....	377	TT015M.....	94		
TC402	9	TM77.....	380	TT016.....	94		
TC41	82	TM92N.....	382	TT018.....	94		
TC42AB	17	TM94.....	376	TT12.....	383		
TC42ES	6	TME.....	97	TT15.....	127		
TC42ESCI	11	TN05 - TN10.....	78	TT17.....	127		
TC43	82	TN15	78	TT24B.....	384		
TC45	7	TN17	78	TT30.....	382		
TC47	8	TN18N.....	78	TT7415.....	273		
TC4712	8	TN200	84	TTCL.....	40		
TC47V2.....	7	TO07	376	TV10.....	30		
TC50 - TC95 - TC150.....	416	TP05A	15	TW2010.....	240		
TC51N	38	TP05B	14	TW2134 - TW2135	240		
TC52	38	TP05B3	14	TW2136 - TW2137	241		
TC53	273	TP10.....	494	TW2162.....	241		
TC56	220	TP105.....	79	TW2164.....	241		
TC58	581	TP11.....	495	TW2165.....	242		
TC69 - TC70	174	TP115.....	80	TW2167.....	242		
TC71	174	TP12.....	107	TW2168.....	242		
TC72	174	TP13C	90	TW2170.....	242		
TC73	174	TP13CS	91	TW2350.....	243		
TC74	581	TP13P - TP13T	89	TW2350F.....	243		
TC75	164	TP2300.....	289	TW2350-IEC-300-#	251		
TC76N	167	TP25.....	263	TW2351.....	244		
TC77	175	TP26.....	263	TW2351F.....	243		
TC78	175	TP30.....	262	TW2380.....	238		
TC79	175	TP31ST2.....	107	TW2381.....	238		
TCD2000.....	416	TP51.....	399	TW2382.....	238		
TD09	573	TP54N	381	TW2383.....	238		
TD10	481	TP55N	381	TW2384.....	239		
TD386	345	TP57.....	386	TW2385.....	239		
TDP536 - TDP572.....	90	TP60P	79	TW2386.....	239		
TDPESEC	106	TP60PS.....	79	TW2387.....	239		
TDR1000/3P.....	388	TP71.....	605	TW2388.....	240		
TDR2000/3P.....	387	TP72.....	214	TW2392.....	244		
TDR900	387	TP73.....	479	TW2393.....	244		
TE04.....	213	TP75.....	214	TW2394.....	244		
TE05.....	213	TP90.....	503	TW2410.....	236		
TE08.....	85	TPE.....	96	TW2411.....	236		
TE14AUD - TE16AUD	469	TPEPVC.....	95	TW2415.....	236		
TE17AUD - TE12AUD	466	TR - TRL - TRC.....	256	TW2417.....	237		
TE18AUD - TE20AUD	468	TR055	83	TW2418.....	237		
TE22AUD	467	TRE.....	96	TW2421.....	237		
TE26.....	327	TREPVC	95	TW2429.....	245		
TE30AUD	474	TRIF	341	TW2430.....	245		
TE32.....	470	TRL.....	418	TW2431.....	245		
TE33AUD	473	TS05.....	81	TW2531.....	246		
TE40 - TE45 - TE50	497	TS10.....	31	TW2532.....	246		
TE41AUD	475	TS10T.....	31	TW2540 - TW2541	246		
TE60.....	220	TS20 - TS21	82	TW4035.....	234		
TE61.....	476	TS26.....	81	TW4050.....	235		
TE-FR100	370	TS26.....	141	TW4120 series	235		
TFK / TSF connections	359	TS270.....	223	TW4130.....	235		
TG05	33	TS27V - TS27TV	136	TW6506.....	247		

U

UFH	278
ULD-40	392
UNITAG	292
USB14X200	457

V

V042.....	498
V10.....	584
V148.....	231
V16.....	498
V50.....	584
V658.....	227
VECTOR	297
VES25.....	105
VES250B - VES360B	106
VES36.....	105
VETPLUIE	53
VISUHTA.....	287
VLE.....	219
VPEJ - VPEV.....	53

W

W30V.....	371
-----------	-----

X

XC25	512
XC40	512
XC55	513
XC85	513
XE9.....	435
XE9060.....	436
XE9062.....	438
XE9063B	436
XE9066.....	437
XE9067.....	437
XE9068.....	436
XE9070.....	440
XE9072C	435
XE9075P.....	439
XE9076.....	436
XE9105.....	435
XE9107.....	438
XE9109.....	359
XP130.....	525
XP130	525
XPH250	525
XPH450	526
XPU250	526

Because
every detail
counts...
...your safety
is our
priority



Hylec Energy Solutions
39 Millenium Place
TINGALPA Qld 4173, Australia
Phone : (07) 3396 2220 • Fax : (07) 3396 1217
Contact : ask@hylec.com.au
www.hylec.com.au



Hylec NZ Ltd
PO Box 10151
Rotorua Mail Centre
ROTORUA 3046, New Zealand
Phone : +61 7 3396 2220 • Fax : +61 7 3396 1217
Mob : +64 (0)273 396 222 - NZ
Contact : ian@hylecnz.co.nz

ZOE Communication • www.zoe.fr - Document not contractually binding. Errors and omissions excepted. Reproduction, even partial, is prohibited.

Edition 1

Edition 1

HYLEC

HYLEC



**WE BUILD SOLUTIONS FOR
SAFETY AND PERFORMANCE**

