

# rotoline

THE NEW RANGE OF INSULATED  
1000V SCREWDRIVERS



**HYLEC**  
energy solutions

**SIBILLE**  
OUTILLAGE

## Blade Type

## Shank Size

## Rotoline Standard - Classic

## Rotoline Rotating End

## Rotoline Rotate & Stop End

2 x 70

3 x 100

4 x 120

5,5 x 100

5,5 x 150

6,5 x 150

8 x 150

8 x 200

10 x 150

10 x 250

12 x 200

**FLAT  
HEAD**

RL1-PL-2X70\*

RL1-PL-3X100\*

RL1-PL-4X120

RL1-PL-55X100

RL1-PL-55X150

RL1-PL-65X150

RL1-PL-8X150

RL1-PL-8X200

RL1-PL-10X150

RL1-PL-10X250

RL1-PL-12X200

RL2-PL-2X70\*

RL2-PL-3X100\*

RL2-PL-4X120

RL2-PL-55X100

RL2-PL-55X150

RL2-PL-65X150

RL2-PL-8X150

RL2-PL-8X200

RL2-PL-10X150

RL2-PL-10X250

RL2-PL-12X200

-

-

-

-

-

-

RL3-PL-8X150

RL3-PL-8X200

RL3-PL-10X150

RL3-PL-10X250

RL3-PL-12X200

n°0 - 4 x 75

n°0 - 4 x 150

n°1 - 5 x 100

n°2 - 6 x 125

n°3 - 8 x 150

n°4 - 10 x 200

**PHILLIPS  
HEAD**

RL2-PH-4X75

RL2-PH-4X150

RL2-PH-5X100

RL2-PH-6X125

RL2-PH-8X150

RL2-PH-10X200

-

-

-

-

RL3-PH-8X150

RL3-PH-10X200

n°0 - 4 x 75

n°0 - 4 x 150

n°1 - 5 x 100

n°2 - 6 x 125

n°3 - 8 x 150

n°4 - 10 x 200

**POZI  
DRIVE**

RL2-PZ-4X75

RL2-PZ-4X150

RL2-PZ-5X100

RL2-PZ-6X125

RL2-PZ-8X150

RL2-PZ-10X200

-

-

-

-

RL3-PZ-8X150

RL3-PZ-10X200

T10

T20

T27

T30

T45

**TORX  
HEAD**

RL2-TX-T10\*

RL2-TX-T20

RL2-TX-T27

RL2-TX-T30

RL2-TX-T45

-

-

-

-

RL3-TX-T45

1000 V

**Handle**

Ergonomic handle with high-quality soft coating for comfort and grip. The handle is designed for powerful and comfortable tightening. Four different handle dimensions are available, depending on the blade diameter. Markings are applied showing standard information and product number.



**Insulated blade**

The insulating sleeve is integral with the handle, injected directly around the blade. 1000V insulation in accordance with electrical standard IEC 60900:2012 and mechanical standards ISO2380-1 and ISO8764-1, VDE certified.



**Blade**

High strength tempered and burnished steel for more precision.



**A SHAPE DESIGNED WITH GREAT CARE ...**

**Round end**

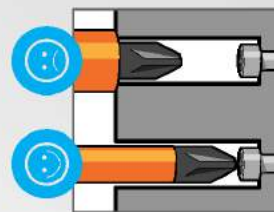
The round end is absolutely smooth and shaped to suit the hollow of the palm for quick and precise rotation.



The round end of the handle is marked with the symbol of the blade type, and the pictogram associated with the type of Rotoline model: Classic, Turn or Turn & Block.

**Identification ring**

Each screwdriver has a coloured ring on the handle. The ring colour corresponds to the type of screwdriver blade, allowing a quick identification.



**"Smart Diameter" blade**

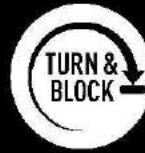
The blades are turned to offer no excess thickness of the insulating material at the top of the blade in order to reach screws set in narrow recesses.



1000 V

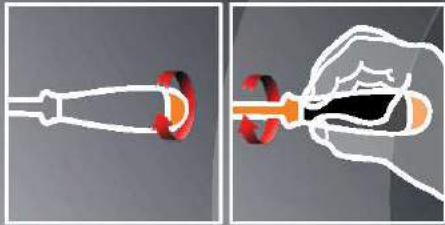
PATENTED  
TECHNOLOGY

rotoline



# A REVOLUTION IN THE WORLD OF SCREWDRIVERS A NEW APPROACH TO TIGHTENING

Like Rotoline Turn, the rotating ball end makes initial tightening much easier.  
For final tightening, the ball can be locked to apply greater force.



### Initial tightening position

The rotating ball of the handle is held in the palm and the fingers control the rotation of the screwdriver.



During final tightening, the palm naturally presses the rotating ball and blocks it.



### Final tightening

Traditional grip for force tightening.

NB: Functional block diagram of the screwdriver  
According to regulations, wearing insulating gloves is mandatory.



**HYLEC**  
energy solutions