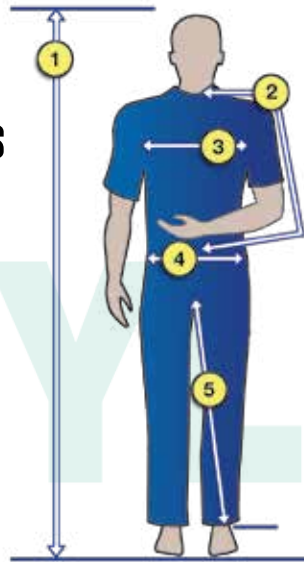


For a correct fit follow these directions

- Always have someone else take the measurements.
- Hold tape straight and snug, but not tight.
- If the measurements fall between two sizes, order the larger size.



- 1. Height:** Measure the height from the top of your head to ground level beside the feet, without shoes.
- 2. Sleeve:** Measure from the middle of the back of the neck to the elbow point and then to the wrist bone the correct size.
- 3. Chest:** Measure just under the arms and around the fullest part of the chest.
- 4. Waist:** Measure around the waist (or belt line), and the number of even inches measured is the correct size.
- 5. Inseam:** Measure a pair of well-fitting pants along the inside seam from the crotch to the bottom of the hem.

energy solutions

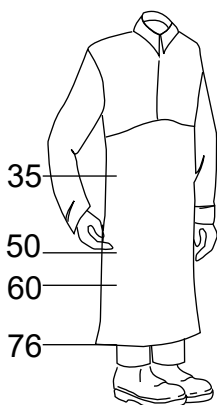
Coveralls, Bib Overalls, Jackets, Shirts, Cape Sleeves & Coats								
Alpha Size	S	M	L	XL	2XL	3XL	4XL	5XL
Chest Size CM	86-92	97-102	106-112	117-122	127-132	137-142	147-152	157-162
Height	Short= 167CM and under, Tall = 185 - 190CM (Only applies to Coveralls & Bib Overalls)							

Jeans & Pants

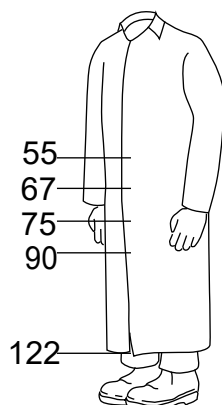
Waist sizes: 71-137CM

Inseam: 76-92CM

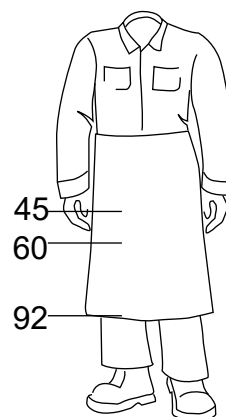
Standard Inseam: 81CM



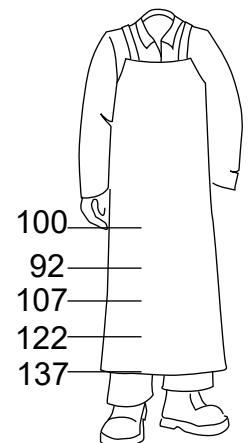
BIB LENGTHS



JACKET / COAT LENGTHS



WAIST APRON LENGTHS



BIB APRON LENGTHS